



Customer information packet

VXT3052T

5HP, 3490RPM, 3PH, 60HZ, 184TC, 0632M, TEFC, F1

ELECTRIC MOTOR WHOLESAL.COM

Class - CLI GP A,B,C,D

Division - Division II

Specifications

Enclosure	TEFC
Frame	184TC
Frame Material	Iron
Frequency	60.00 Hz
Output @ Frequency	5.000 HP @ 60 HZ
Phase	3
Synchronous Speed @ Frequency	3600 RPM @ 60 HZ
Voltage @ Frequency	460.0 V @ 60 HZ 230.0 V @ 60 HZ 208.0 V @ 60 HZ
XP Class and Group	CLIP A,B,C,D
XP Division	Division II
Agency Approvals	CCSA US CSA EEV NEMA PREMIUM UR
Ambient Temperature	40 °C
Auxillary Box	No Auxillary Box
Auxillary Box Lead Termination	None
Base Indicator	No Mounting
Bearing Grease Type	Polyrex EM (-20F +300F)
Blower	None
Constant Torque Speed Range	6
Current @ Voltage	5.700 A @ 460.0 V 12.500 A @ 208.0 V 11.400 A @ 230.0 V
Design Code	A
Drip Cover	No Drip Cover
Duty Rating	CONT
Efficiency @ 100% Load	90.2 %
Electrically Isolated Bearing	Not Electrically Isolated
Feedback Device	NO FEEDBACK

Part detail

Revision	A
Type	AC
Mech. spec.	
Base	
Status	PRD/A
Elec. spec.	06WGW730
Layout	06LYH799
Eff. date	03-29-2021
CD Diagram	CD0005
Poles	02
Leads	9#16
Proprietary	False
Created date	11-10-2020

Heater Indicator	No Heater
High Voltage Full Load Amps	5.7 a
Insulation Class	F
Inverter Code	Inverter Duty
IP Rating	NONE
KVA Code	M
Lifting Lugs	Standard Lifting Lugs
Locked Bearing Indicator	Locked Bearing
Motor Lead Termination	Flying Leads
Motor Standards	NEMA
Motor Type	0632M
Mounting Arrangement	F1
Number of Poles	2
Overall Length	15.98 IN
Power Factor	90
Product Family	General Purpose
Pulley Face Code	C-Face
Rodent Screen	None
Service Factor	1.00
Shaft Diameter	1.125 IN
Shaft Ground Indicator	No Shaft Grounding
Shaft Rotation	Reversible
Speed	3490 rpm
Speed Code	Single Speed
Starting Method	Direct on line
Thermal Device - Bearing	None
Thermal Device - Winding	None
Vibration Sensor Indicator	No Vibration Sensor
Winding Thermal 1	None
Winding Thermal 2	None
XP Temp Code	T3C

Nameplate

NP4163L									
CAT.NO.	VXT3052T				I.P.	54			
SPEC.	06-0000-0788				ENCL	TEFC			
FRAME	184TC		H.P.	5					
VOLTS	208-230/460		P.F.	90					
F.L. AMPS	12.5-11.4/5.7		RATING	40C AMB-CONT					
R.P.M.	3490		USABLE AT 208V						
HZ.	60		PH.	3		CLASS	F		
SER.F.	1.15		DES.	A		SL HZ	1.8		
NEMA NOM. EFF.	90.2		WK2	0.15					
DE	6206		ODE	6205					
MAG. CUR.	3.4-4.2/2.1								
INV TYPE	PWM	CHP	60		TO	90		T. CODE	T3C
CT	6	TO	60		VT	6		TO	60
CC	010A		SN						
USABLE AT 50 HZ 3HP 190/380V									
8.8/4.4A									

Parts list

Part number	Description	Quantity
SA389477	SA 06-0000-0788	1.000 ea
RA379860	RA 06-0000-0788	1.000 ea
LB1115N	LABEL,LIFTING DEVICE (ON ROLLS)	1.000 ea
LC0005E01	CONN.DIA./WARNING LABEL (LC0005/LB1119N)	1.000 ea
LB1449	DIV-2/NEC WARNING LABEL	1.000 ea
PK3082	STYROFOAM CRADLE	1.000 ea
NP4163L	SS CP INV DIV-2 UL CSA-C US EEV PREM, DI	1.000 ea
85XU0407S04	4X1/4 U DRIVE PIN STAINLESS	2.000 ea
MN416A01	TAG-INSTAL-MAINT no wire (2100/bx) 4/22	1.000 ea
HW3201A05	3/8-16 EYEBOLT	1.000 ea
36FH4009A101	IEC FH NO GREASER, W/PRIMER	1.000 ea
51XW1032A06	10-32 X .38, TAPTITE II, HEX WSHR SLTD S	3.000 ea
34FN3002A02	EXTERNAL FAN, PLASTIC, .905/.907 HUB W/	1.000 ea
51XB0818A12	8-18X3/4 HWSSLD SERTYB	1.000 ea
MJ1000A02	GREASE, MOBIL POLYREX EM - 124047	0.050 lb
HA3101A34	THRUBOLT- 1/4-20 X 10.375	4.000 ea
36EP3104B47	FREP MACH W/O GRSR,RAISED FH PADS,SLING	1.000 ea
HW4600B32SP	V-RING SLINGER 1.000 X 1.540 X .24 VITON	1.000 ea
HW5100A05	WVY WSHR F/205 & 304 BRGS	1.000 ea
HA4067A01	PUSH IN DRAIN FITTING (BLACK)	1.000 ea
36EP3301A34	SPL PU. ENDPLATE - ENCLOSED	1.000 ea
HW4600B36SP	V-RING SLINGER 1.188 X 1.690 X .24 VITON	1.000 ea
10XN2520A28	1/4-20X 1 3/4 HEX HD	4.000 ea
HW1001A25	LOCKWASHER 1/4, ZINC PLT .493 OD, .255 I	4.000 ea
HA4067A01	PUSH IN DRAIN FITTING (BLACK)	1.000 ea
06CB3000	BALDOR CONDUIT BOX CAST	1.000 ea
06GS1000	GASKET,CONDUIT BOX	1.000 ea
51XW2520A12	SCREW, HEX SER SLT HD, ZN, 1/4-20 X .75	2.000 ea
11XW1032G06	10-32 X .38, TAPTITE II, HEX WSHR SLTD U	1.000 ea
HW3001B02	BRASS CUP WASHER W/GROUND SYMBOL TAB,	1.000 ea
06CB3500	BALDOR CONDUIT BOX LID	1.000 ea

06GS1001	BALDOR CONDUIT BOX GASKET	1.000 ea
51XW2520A12	.25-20 X .75, TAPTITE II, HEX WSHR SLTD	2.000 ea
MG1025L14	WILKOFAST, 776.14, GRUNDFOS BLACK	0.125 ga
36PA1001	PKG GRP, PRINT PK1017A06	1.000 ea
HW2501E16	KEY, 1/4 SQ X 1.750	1.000 ea
HA7000A02	KEY RETAINER RING, 1 1/8 DIA, 1 3/8 DIA	1.000 ea

AC Induction Motor Performance Data

Record # 34771

Typical performance - not guaranteed values

Winding: 06WGW730-R020		Type: 0632M	Enclosure: XPFC	
Nameplate Data			460 V, 60 Hz: High Voltage Connection	
Rated Output (HP)	5	Full Load Torque	7.54 LB-FT	
Volts	230/460	Start Configuration	direct on line	
Full Load Amps	11.4/5.7	Breakdown Torque	40.1 LB-FT	
R.P.M.	3490	Pull-up Torque	30.6 LB-FT	
Hz	60 Phase	Locked-rotor Torque	36.9 LB-FT	
NEMA Design Code	A KVA Code	Starting Current	64.8 A	
Service Factor (S.F.)	1.15	No-load Current	2.08 A	
NEMA Nom. Eff.	90.2 Power Factor	Line-line Res. @ 25°C	1.93 Ω	
Rating - Duty	40C AMB-CONT	Temp. Rise @ Rated Load	51°C	
S.F. Amps		Temp. Rise @ S.F. Load	64°C	
		Locked-rotor Power Factor	45	
		Rotor inertia	0.143 LB-FT ²	

Load Characteristics 460 V, 60 Hz, 5 HP

% of Rated Load	25	50	75	100	125	150	S.F.
Power Factor	55	76	85	90	93	93	92
Efficiency	84.4	89.7	90.8	90.7	90	89	90.3
Speed	3570	3544	3517	3489	3458	3426	3470
Line amperes	2.54	3.47	4.6	5.76	7.03	8.46	6.52

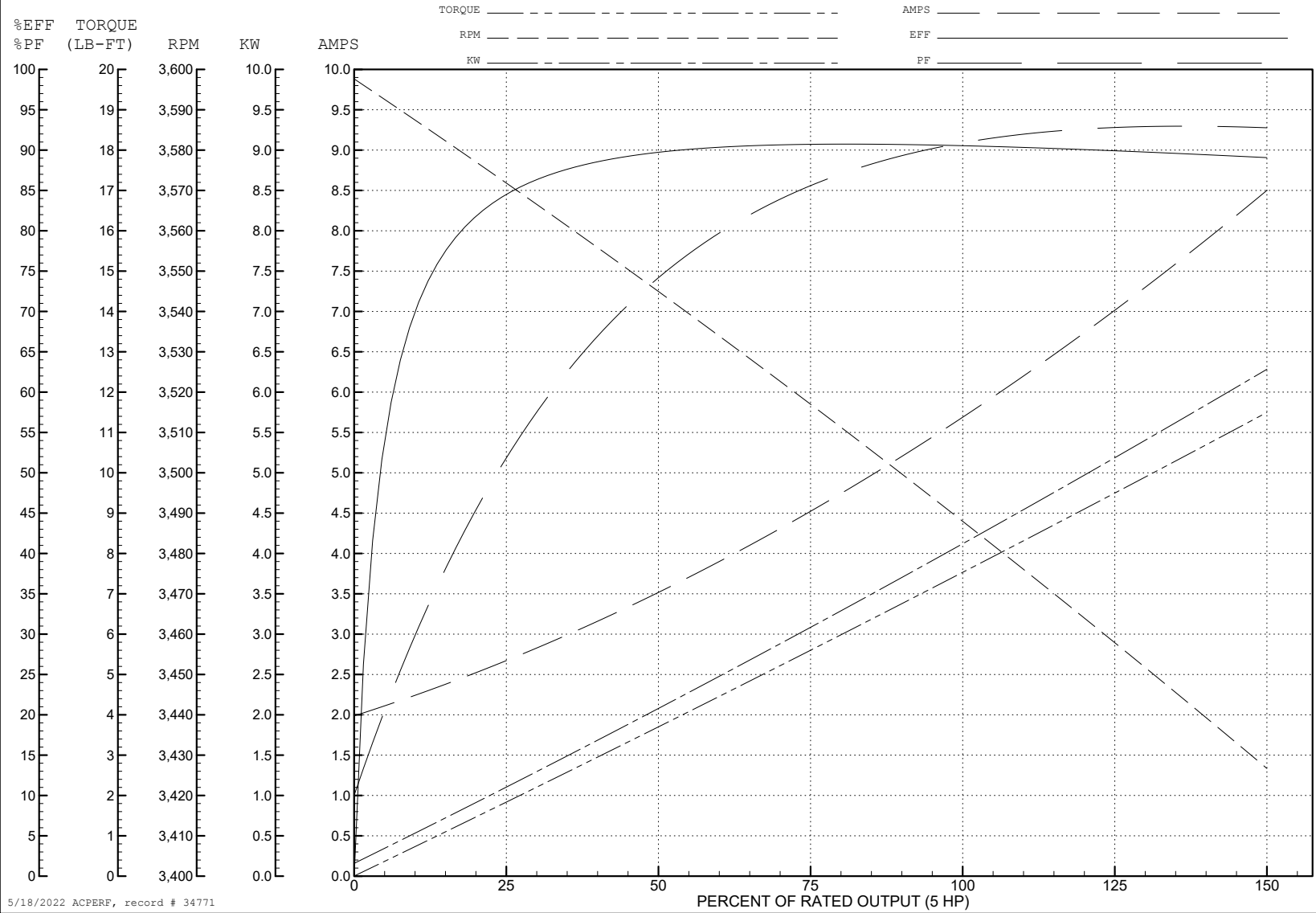
ABB Motors and Mechanical Inc.

WINDING # 06WGW730

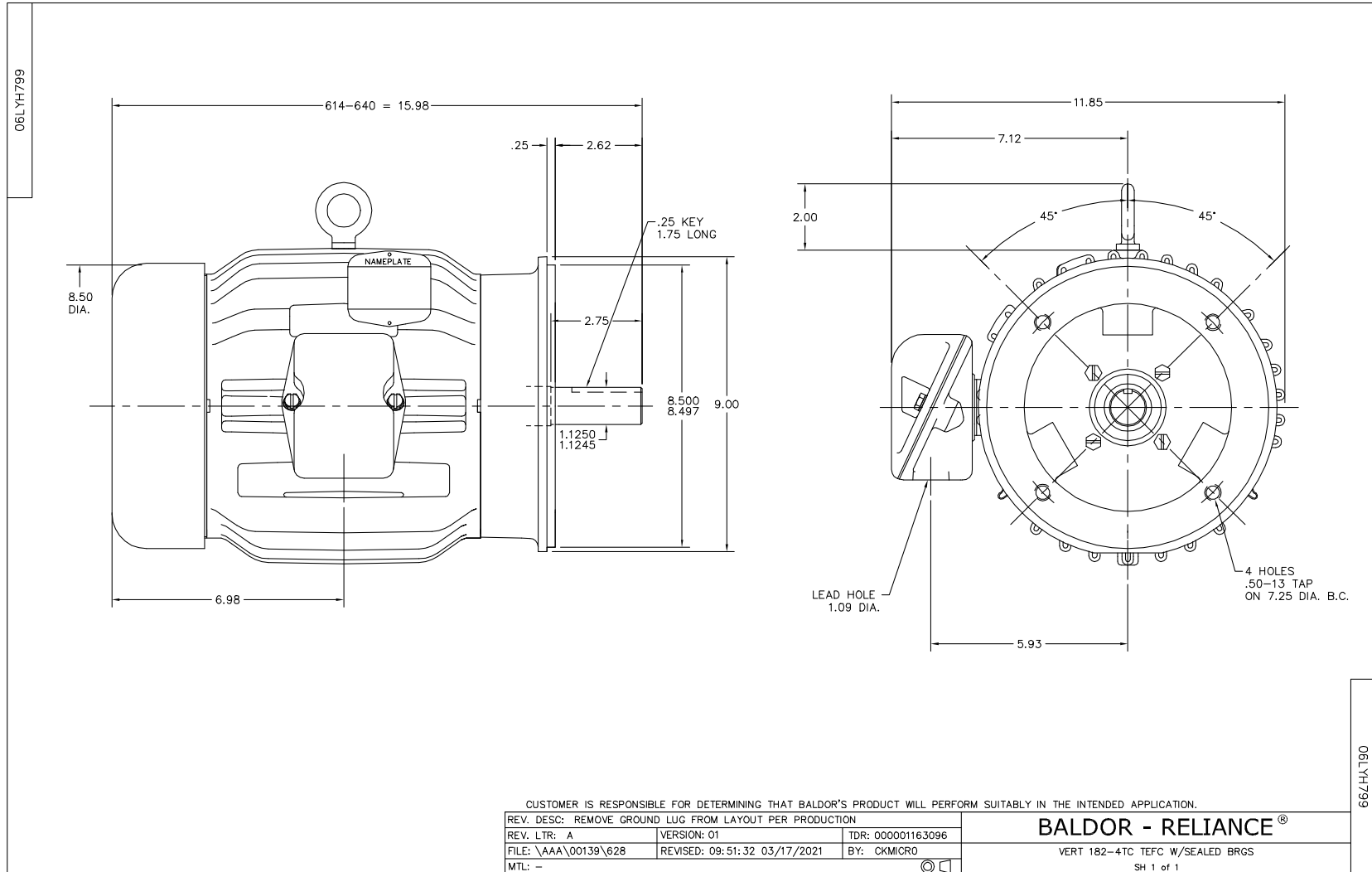
Typical performance - not guaranteed values.

5 HP 3 PH 60 HZ 3490 RPM 460 V 0632M

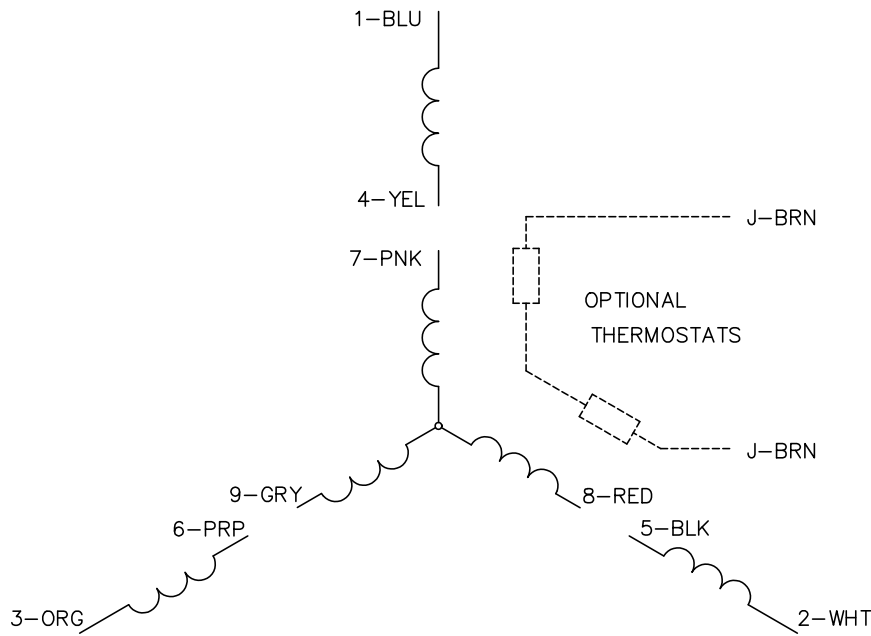
TORQUES (LB-FT): PO=40.1 PU=30.6 LR=36.9 LRA=64.8



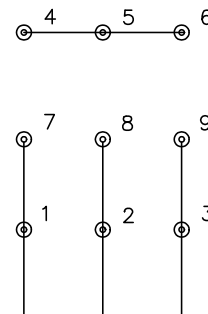
5/18/2022 ACPERF, record # 34771



CD0005

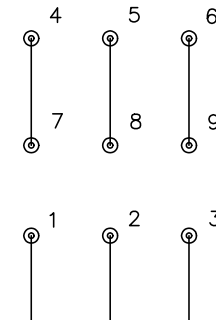


LOW VOLTAGE
(2Y)



LINE

HIGH VOLTAGE
(1Y)



LINE

NOTES:

1. INTERCHANGE ANY TWO LINE LEADS TO REVERSE ROTATION.
2. OPTIONAL THERMOSTATS ARE PROVIDED WHEN SPECIFIED.
3. ACTUAL NUMBER OF INTERNAL PARALLEL CIRCUITS MAY BE A MULTIPLE OF THOSE SHOWN ABOVE.
4. LEAD COLORS ARE OPTIONAL. LEADS MUST ALWAYS BE NUMBERED AS SHOWN.

CD0005

REV. DESC: REVISE TO SHOW OPTIONAL COLORS			
REV. LTR: E	BY: JLP	REVISED: 01/19/99 10:15	TDR: 0171435
S00000		FILE: AAA00005140	MDL: -
		MTL: -	

BALDOR ELECTRIC Co.

3PH, DV, 9 LEADS