



---

# Customer information packet

## CXM050722A

0.75HP, 3450RPM, 3PH, 60HZ, 56C, XPFC, F1

Class - CLI GP D; CLII GP F,G

Division - Division I

## Specifications

Enclosure	XPFC
Frame	56C
Frame Material	Steel
Frequency	60.00 Hz
Motor Letter Type	Three Phase
Output @ Frequency	.750 HP @ 60 HZ
Phase	3
Synchronous Speed @ Frequency	3600 RPM @ 60 HZ
Voltage @ Frequency	460.0 V @ 60 HZ 208.0 V @ 60 HZ 230.0 V @ 60 HZ
XP Class and Group	CLI GP D; CLII GP F,G
XP Division	Division I
Agency Approvals	CSA UL
Ambient Temperature	40 °C
Auxillary Box	No Auxillary Box
Auxillary Box Lead Termination	None
Base Indicator	Rigid
Bearing Grease Type	Polyrex EM (-20F +300F)
Blower	None
Current @ Voltage	1.300 A @ 460.0 V 2.600 A @ 230.0 V 2.700 A @ 208.0 V
Design Code	B
Drip Cover	No Drip Cover
Duty Rating	CONT
Efficiency @ 100% Load	75.0 %
Electrically Isolated Bearing	Not Electrically Isolated
Feedback Device	NO FEEDBACK
Heater Indicator	No Heater
High Voltage Full Load Amps	1.3 a

## Part detail

Revision	C
Type	AC
Mech. spec.	
Base	
Status	PRD/A
Elec. spec.	34WG5722
Layout	34LY5329
Eff. date	07-01-2022
CD Diagram	CD0007
Poles	02
Leads	12#18
Proprietary	False
Created date	08-03-2020

<b>Insulation Class</b>	<b>B</b>
<b>Inverter Code</b>	<b>Not Inverter</b>
<b>IP Rating</b>	<b>NONE</b>
<b>KVA Code</b>	<b>K</b>
<b>Lifting Lugs</b>	<b>No Lifting Lugs</b>
<b>Locked Bearing Indicator</b>	<b>No Locked Bearing</b>
<b>Motor Lead Termination</b>	<b>Flying Leads</b>
<b>Motor Standards</b>	<b>NEMA</b>
<b>Motor Type</b>	<b>3413M</b>
<b>Mounting Arrangement</b>	<b>F1</b>
<b>Number of Poles</b>	<b>2</b>
<b>Overall Length</b>	<b>13.22 IN</b>
<b>Power Factor</b>	<b>73</b>
<b>Product Family</b>	<b>Hazardous Location Motor</b>
<b>Pulley Face Code</b>	<b>C-Face</b>
<b>Rodent Screen</b>	<b>None</b>
<b>Service Factor</b>	<b>1.00</b>
<b>Shaft Diameter</b>	<b>0.625 IN</b>
<b>Shaft Ground Indicator</b>	<b>No Shaft Grounding</b>
<b>Shaft Rotation</b>	<b>Reversible</b>
<b>Speed</b>	<b>3450 rpm</b>
<b>Speed Code</b>	<b>Single Speed</b>
<b>Starting Method</b>	<b>Direct on line</b>
<b>Thermal Device - Bearing</b>	<b>None</b>
<b>Thermal Device - Winding</b>	<b>None</b>
<b>Vibration Sensor Indicator</b>	<b>No Vibration Sensor</b>
<b>Winding Thermal 1</b>	<b>Automatic Thermal Overload</b>
<b>Winding Thermal 1 Location</b>	<b>EP</b>
<b>Winding Thermal 2</b>	<b>None</b>
<b>XP Temp Code</b>	<b>T3C</b>

## Nameplate

NP0016XPSL									
NO.		CC							
SER. #									
SPEC	34-0000-0384								
CAT.NO.	CXM050722A								
H.P.	.75	T. CODE	T3C						
VOLTS	208-230/460								
AMPS	2.7-2.6/1.3								
R.P.M.	3450 34WG5722								
HZ	60	PH	3	CLASS	B				
SER.F.	1.00	DES	B	CODE	K				
RATING	40C AMB-CONT								
FRAME	56C	NEMA NOM. EFF	75						
USABLE AT 208V	N/A	PF	73						
BLANK	NEMA MG-1 PART 5, IP54								

## Parts list

Part number	Description	Quantity
SA385402	SA 34-0000-0384	1.000 ea
RA375643	RA 34-0000-0384	1.000 ea
LB1118	LABEL,WARNING (ROLL LABEL)	1.000 ea
LC0007	CONNECTION LABEL	1.000 ea
NP0016XPSL	SS XP UL CSA CC CL-I GP-D CL-II GP-F&G	1.000 ea
85XU0407S04	4X1/4 U DRIVE PIN STAINLESS	2.000 ea
85XU0407S04	4X1/4 U DRIVE PIN STAINLESS	4.000 ea
MN416A01	TAG-INSTAL-MAINT no wire (2100bx)4/22	1.000 ea
NP0018W	ALUM UL XP CONDUIT BOX NAMEPLATE	1.000 ea
TPMYJ68KX	THERMAL 3PH 0.75 AUT 120C	1.000 ea
51XT0632A06	6-32X3/8 TY F HEX HD SLT	2.000 ea
HA6001A01	THERMAL RETAINER (PLATED)	1.000 ea
NS2500A05	INSULATOR, AUTO THER PROT	1.000 ea
34FH4002A01SP	IEC FH NO GREASER PRIMED	1.000 ea
51XW1032A06	10-32 X .38, TAPTITE II, HEX WSHR SLTD S	3.000 ea
34FN3002A01SP	EXTERNAL FAN, PLASTIC, .637/.639 HUB W/	1.000 ea
MJ1000A02	GREASE, POLYREX EM EXXON	0.050 lb
HA3104A03	THRUBOLT 5/16-18 X 7.625 W QTE#457	4.000 ea
34EP3703A01	FR ENDPLATE, MACH XP	1.000 ea
HW5100A03	WAVY WASHER (W1543-017)	1.000 ea
34EP3705A01SP	PU ENDPLATE, MACH	1.000 ea
35CB3001A01SP	EXPL CONDUIT BOX, MACH, 1/2" PIPE TAP LE	1.000 ea
11XW1032G06	10-32 X .38, TAPTITE II, HEX WSHR SLTD U	1.000 ea
HW4002A02	1-11.5X2LG PIPE NIPPLE (F/S)	1.000 ea
35CB3500A01SP	CONDUIT BOX LID, MACH	1.000 ea
51XN2520A16	SCREW, HEX WS SLT, ZN, 1/4-20 X 1.00	4.000 ea
SP5037A01	TERMINAL PLATE ASS'Y MODEL 34 - 3 PHASE	1.000 ea
51XW0832A07	8-32 X .44, TAPTITE II, HEX WSHR SLTD SE	2.000 ea
HA1025A13	WSHR,FELT,.38" THICK F-26 CLASS	1.000 ea
HW3021E06	1/8 DIA X 5/8 ROLLPIN (F/S)	1.000 ea
WD1000A16	2-520128-2 AMP FLAG TERMINAL(4M/RL)	12.000 ea

WD1000A16	2-520128-2 AMP FLAG TERMINAL(4M/RL)	12.000 ea
MG1025G29	WILKOFAST, 789.229, DARK CHARCOAL GRAY	0.014 ga
36PA1000	PKG GRP, PRINT PK1016A06	1.000 ea
HW2501D13	KEY, 3/16 SQ X 1.375	1.000 ea
HA7000A04	KEY RETAINER 0.625 DIA SHAFTS	1.000 ea
MJ5000A09	EFI KIT #1578 (400 ML CARTRIDGE OF EFI	0.031 ea

**AC Induction Motor Performance Data**

Record # 6819

Typical performance - not guaranteed values

Winding: 34WG5722-R001			Type: 3413M		Enclosure: XPFC		
Nameplate Data			460 V, 60 Hz: High Voltage Connection				
Rated Output (HP)		.75	Full Load Torque		1.2 LB-FT		
Volts		208-230/460	Start Configuration		direct on line		
Full Load Amps		2.7-2.6/1.3	Breakdown Torque		4.8 LB-FT		
R.P.M.		3450	Pull-up Torque		3.5 LB-FT		
Hz	60	Phase	3	Locked-rotor Torque		3.9 LB-FT	
NEMA Design Code		B	KVA Code	K	Starting Current		7.6 A
Service Factor (S.F.)			1	No-load Current		0.85 A	
NEMA Nom. Eff.		75	Power Factor	73	Line-line Res. @ 25°C		24.6 Ω
Rating - Duty			40C	AMB-CONT	Temp. Rise @ Rated Load		64°C

**Load Characteristics 460 V, 60 Hz, 0.75 HP**

% of Rated Load	25	50	75	100	125	150
Power Factor	39	58	67	78	82	84
Efficiency	57.7	70.6	73.6	75.1	74.7	74
Speed	3553	3518	3481	3440	3395	3344
Line amperes	0.95	1.02	1.12	1.33	1.5	1.62

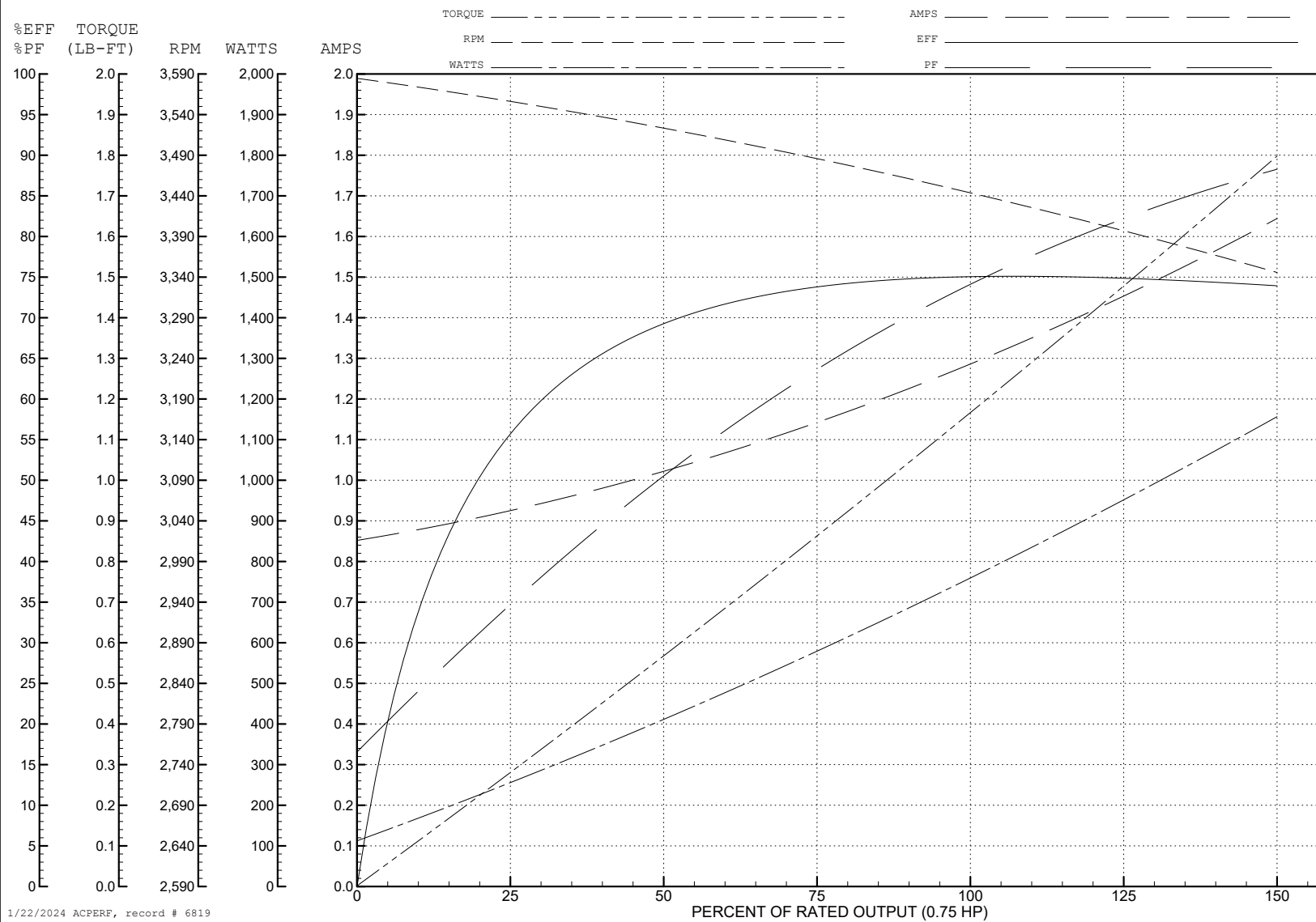
ABB Motors and Mechanical Inc.

WINDING # 34WG5722

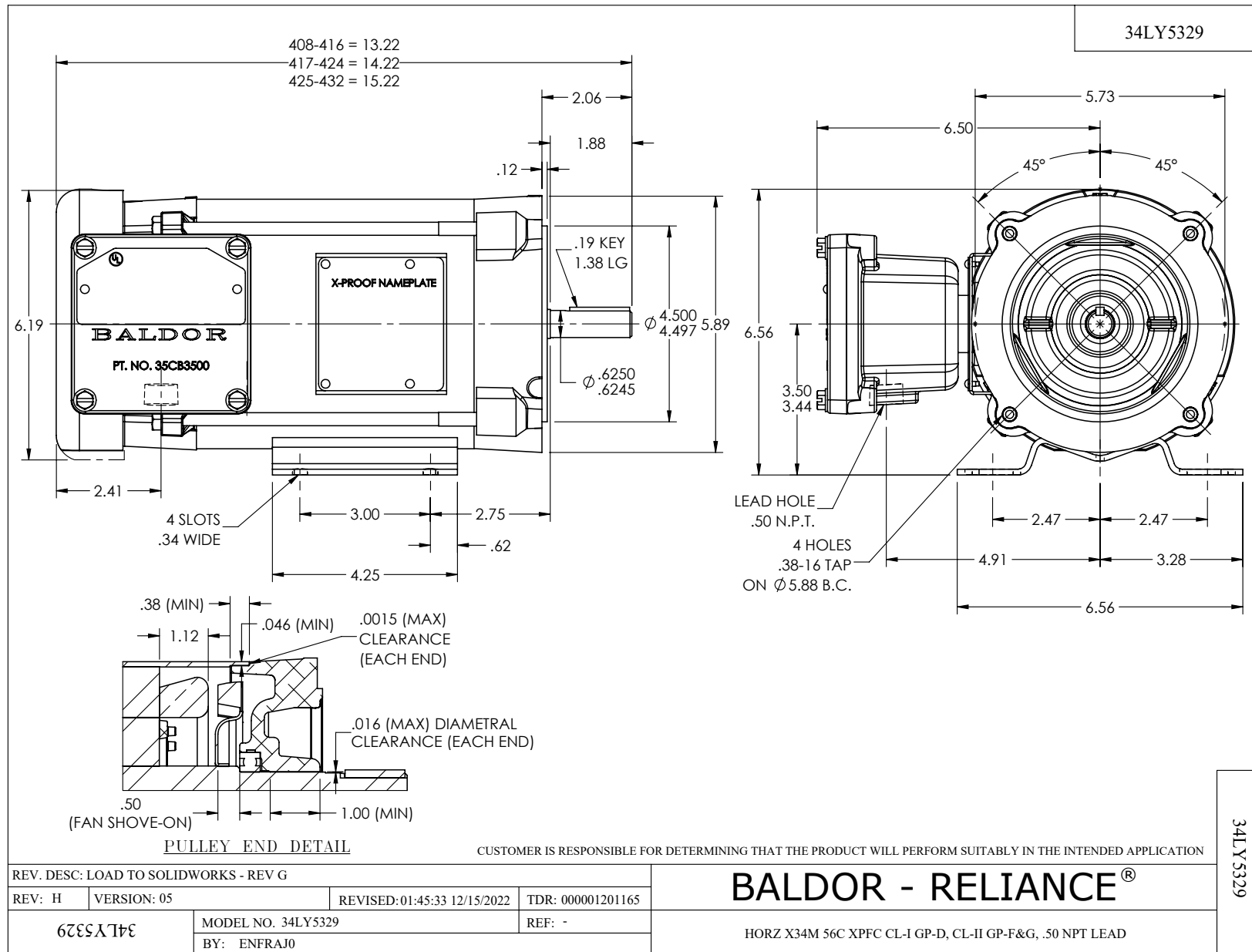
Typical performance - not guaranteed values.

0.75 HP 3 PH 60 HZ 3450 RPM 460 V 3413M

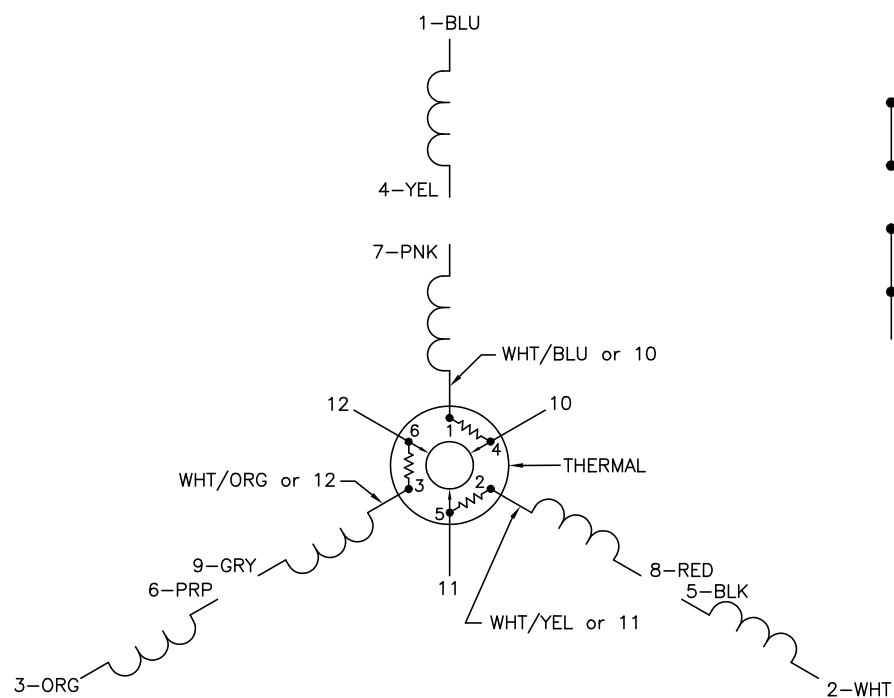
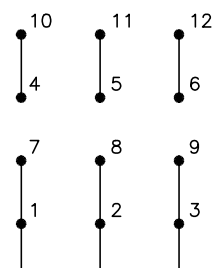
TORQUES (LB-FT): PO=4.8 PU=3.5 LR=3.9 LRA=7.6



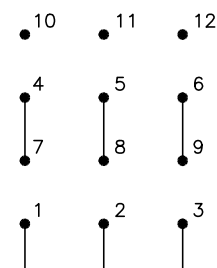




CD0007

LOW VOLTAGE  
(2Y)

LINE

HIGH VOLTAGE  
(1Y)

LINE

## NOTES:

1. INTERCHANGE ANY TWO LINE LEADS TO REVERSE ROTATION.
2. ACTUAL NUMBER OF INTERNAL PARALLEL CIRCUITS MAY VARY.
3. LEAD COLORS ARE OPTIONAL. LEADS MUST ALWAYS BE NUMBERED AS SHOWN.

REV. DESC: ADDED "CK" PLANT CODE

REV. LTR: E

BY: EAH

REVISED: 05/06/99 17:1

TDR: 0181040

200000

FILE: AAA00008370

MDL: -

MTL: -

BALDOR ELECTRIC Co.

3PH, DV, THERMAL, 12 LEADS

CD0007