



Customer information packet

VL3506

.75HP, 3450RPM, 1PH, 60HZ, 56C, 3424L, TEFC, F1

Class - None

Division - Not Applicable

Specifications

Enclosure	TEFC
Frame	56C
Frame Material	Steel
Frequency	60.00 Hz
Motor Letter Type	Cap Start, Induction Run
Output @ Frequency	.750 HP @ 60 HZ
Phase	1
Synchronous Speed @ Frequency	3600 RPM @ 60 HZ
Voltage @ Frequency	115.0 V @ 60 HZ 230.0 V @ 60 HZ
XP Class and Group	None
XP Division	Not Applicable
Agency Approvals	UR CSA
Ambient Temperature	40 °C
Auxillary Box	No Auxillary Box
Auxillary Box Lead Termination	None
Base Indicator	No Mounting
Bearing Grease Type	Polyrex EM (-20F +300F)
Blower	None
Current @ Voltage	4.800 A @ 230.0 V 6.100 A @ 208.0 V 9.600 A @ 115.0 V
Design Code	N
Drip Cover	No Drip Cover
Duty Rating	CONT
Efficiency @ 100% Load	66.0 %
Electrically Isolated Bearing	Not Electrically Isolated
Feedback Device	NO FEEDBACK
Front Face Code	Standard
Front Shaft Indicator	None
Heater Indicator	No Heater

Part detail

Revision	AD
Type	AC
Mech. spec.	34K043
Base	
Status	PRD/A
Elec. spec.	34WG3405
Layout	34LYK043
Eff. date	04-23-2021
CD Diagram	CD0001
Poles	02
Leads	6#18
Proprietary	False
Created date	01-01-0001

High Voltage Full Load Amps	4.8 a
Insulation Class	B
Inverter Code	Not Inverter
KVA Code	K
Lifting Lugs	No Lifting Lugs
Locked Bearing Indicator	Locked Bearing
Motor Lead Exit	Ko Box
Motor Lead Quantity/Wire Size	6 @ 18 AWG
Motor Lead Termination	Flying Leads
Motor Standards	NEMA
Motor Type	3424L
Mounting Arrangement	F1
Number of Poles	2
Overall Length	11.97 IN
Power Factor	74
Product Family	General Purpose
Pulley End Bearing Type	Ball
Pulley Face Code	C-Face
Pulley Shaft Indicator	Standard
Rodent Screen	None
RoHS Status	ROHS COMPLIANT
Service Factor	1.25
Shaft Diameter	0.625 IN
Shaft Extension Location	Pulley End
Shaft Ground Indicator	No Shaft Grounding
Shaft Rotation	Reversible
Shaft Slinger Indicator	No Slinger
Speed	3450 rpm
Speed Code	Single Speed
Starting Method	Direct on line
Thermal Device - Bearing	None
Thermal Device - Winding	None
Vibration Sensor Indicator	No Vibration Sensor
Winding Thermal 1	None

Winding Thermal 2

None

Nameplate

NP1256L										
CAT.NO.	VL3506									
SPEC.	34K43-3405									
HP	.75									
VOLTS	115/230									
AMP	9.6/4.8									
RPM	3450									
FRAME	56C		HZ	60			PH	1		
SER.F.	1.25	CODE	K	DES	N	CLASS	B			
NEMA-NOM-EFF	66	PF	74							
RATING	40C AMB-CONT									
CC			USABLE AT 208V					N/A		
DE	6203		ODE	6203						
ENCL	TEFC	SN								
	SFA 11.6/5.8									

AC Induction Motor Performance Data

Record # 6684

Typical performance - not guaranteed values

Winding: 34WG3405-R001				Type: 3424L		Enclosure: TEFC	
Nameplate Data				230 V, 60 Hz: High Voltage Connection			
Rated Output (HP)		.75		Full Load Torque		1.15 LB-FT	
Volts		115/230		Start Configuration		direct on line	
Full Load Amps		9.6/4.8		Breakdown Torque		3.5 LB-FT	
R.P.M.		3450		Pull-up Torque		2.7 LB-FT	
Hz	60	Phase	1	Locked-rotor Torque		3.7 LB-FT	
NEMA Design Code		N	KVA Code	K	Starting Current		28 A
Service Factor (S.F.)		1.25		No-load Current		3.5 A	
NEMA Nom. Eff.		66	Power Factor	74	Line-line Res. @ 25°C		2.5 Ω A Ph 2.5 Ω B Ph
Rating - Duty		40C AMB-CONT		Temp. Rise @ Rated Load		78°C	
S.F. Amps		11.6/5.8		Temp. Rise @ S.F. Load		92°C	

Load Characteristics 230 V, 60 Hz, 0.75 HP

% of Rated Load	25	50	75	100	125	150	S.F.
Power Factor	36	51	62	70	76	81	0
Efficiency	47.2	61.1	66.5	68.7	68.7	66.7	0
Speed	3561	3534	3500	3464	3421	3365	0
Line amperes	3.6	3.9	4.4	5	5.7	6.7	5.7

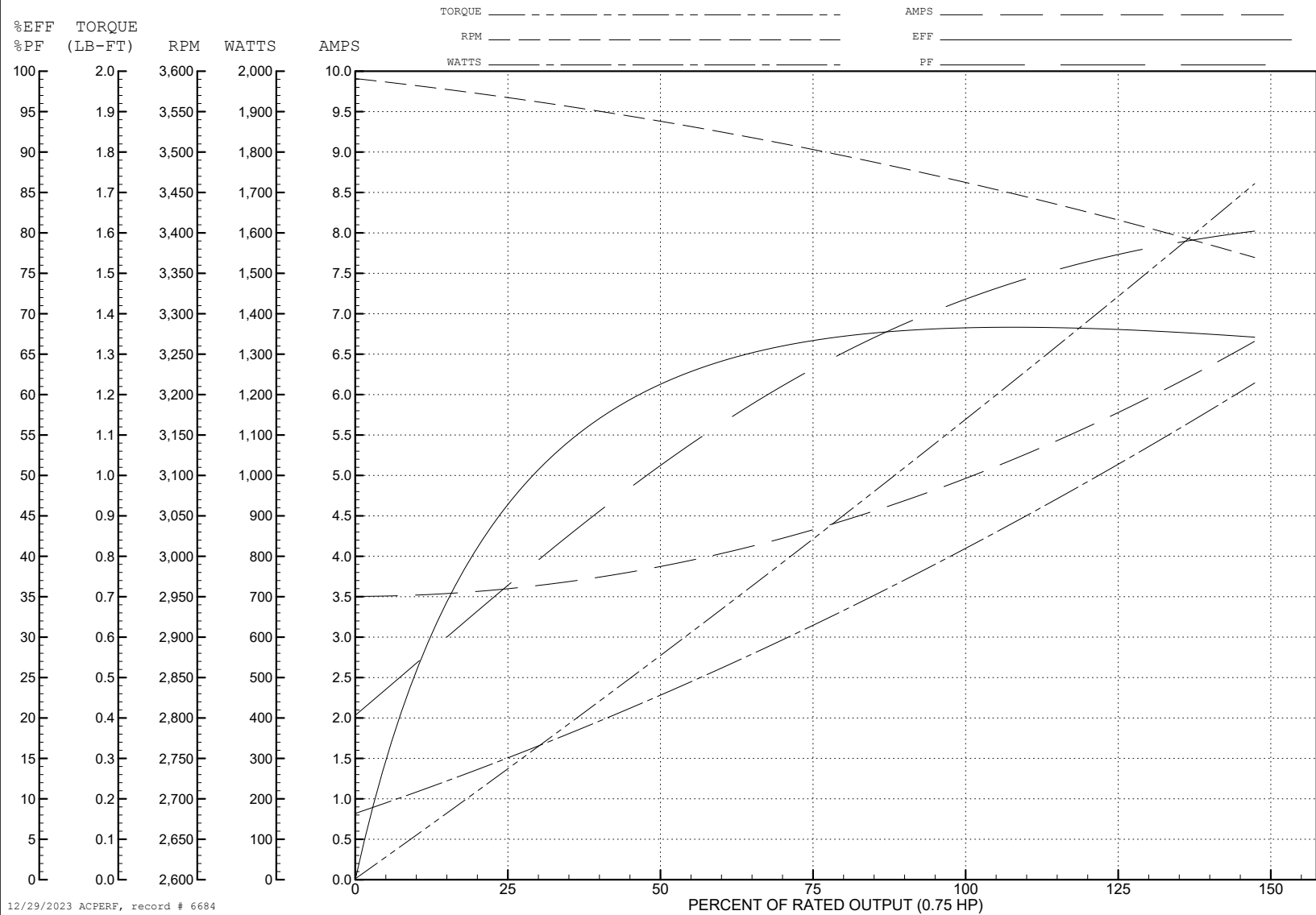
ABB Motors and Mechanical Inc.

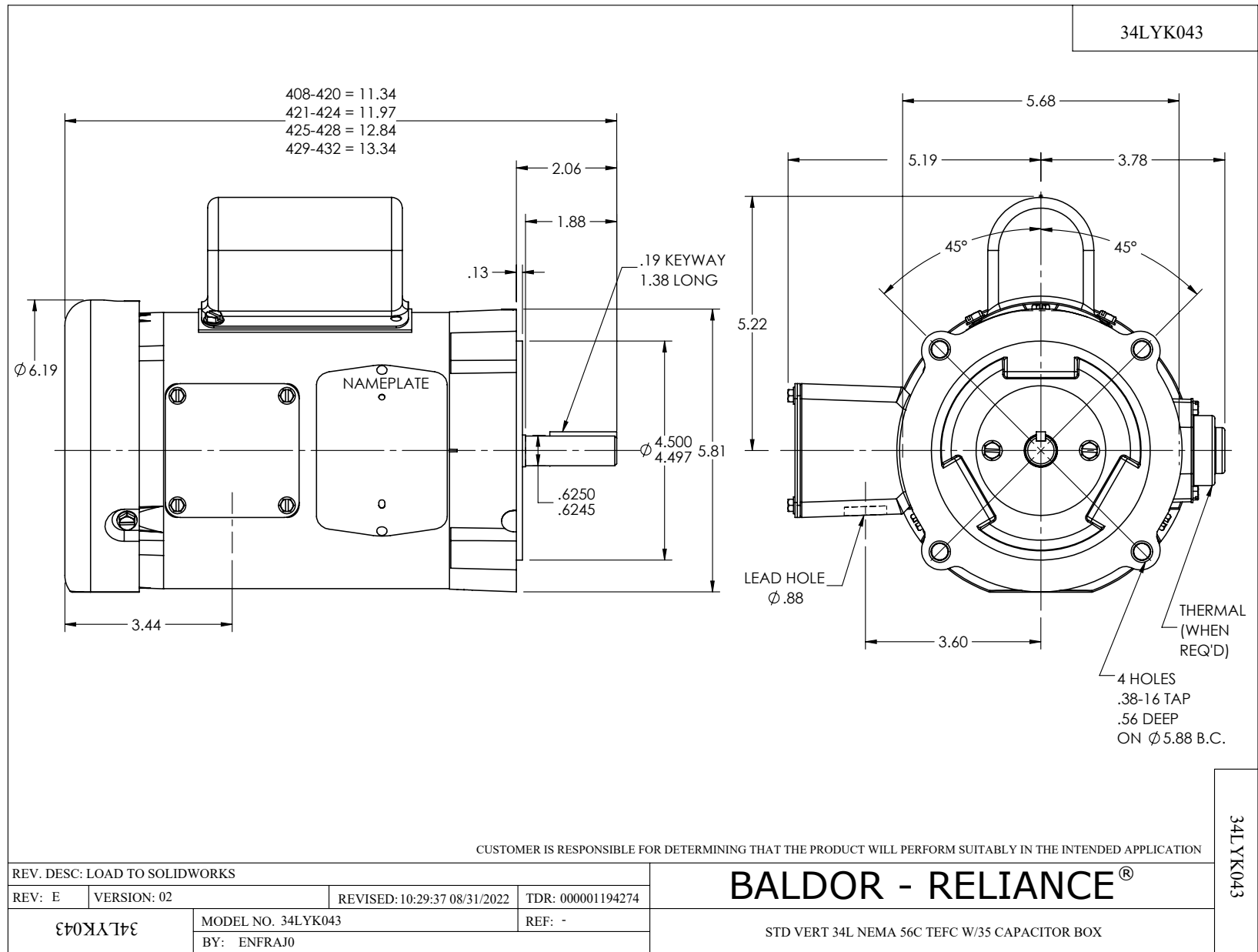
WINDING # 34WG3405

Typical performance - not guaranteed values.

0.75 HP 1 PH 60 HZ 3450 RPM 230 V 3424L

TORQUES (LB-FT) : PO=3.5 PU=2.7 LR=3.7 LRA=28





CD0001

