



---

# Customer information packet

## L3513T

1.5HP, 3450RPM, 1PH, 60HZ, 3524L, N

Class - None

Division - Not Applicable

## Specifications

Enclosure	TEFC
Frame	143T
Frame Material	Steel
Frequency	60.00 Hz
Motor Letter Type	Cap Start, Induction Run
Output @ Frequency	1.500 HP @ 60 HZ
Phase	1
Synchronous Speed @ Frequency	3600 RPM @ 60 HZ
Voltage @ Frequency	115.0 V @ 60 HZ 230.0 V @ 60 HZ
XP Class and Group	None
XP Division	Not Applicable
Agency Approvals	UR CSA
Ambient Temperature	40 °C
Auxillary Box	No Auxillary Box
Auxillary Box Lead Termination	None
Base Indicator	Rigid
Bearing Grease Type	Polyrex EM (-20F +300F)
Blower	None
Current @ Voltage	16.000 A @ 115.0 V 8.000 A @ 230.0 V 8.400 A @ 208.0 V
Design Code	L
Drip Cover	No Drip Cover
Duty Rating	CONT
Efficiency @ 100% Load	70.0 %
Electrically Isolated Bearing	Not Electrically Isolated
Feedback Device	NO FEEDBACK
Front Face Code	Standard
Front Shaft Indicator	None
Heater Indicator	No Heater

## Part detail

Revision	M
Type	AC
Mech. spec.	35Y521
Base	
Status	PRD/A
Elec. spec.	35WGY748
Layout	35LYY521
Eff. date	02-08-2024
CD Diagram	CD0001
Poles	02
Leads	4#16 A PH,2#18 B PH
Proprietary	False
Created date	12-07-2009

High Voltage Full Load Amps	8.0 a
Insulation Class	B
Inverter Code	Not Inverter
KVA Code	J
Lifting Lugs	No Lifting Lugs
Locked Bearing Indicator	No Locked Bearing
Motor Lead Exit	Ko Box
Motor Lead Quantity/Wire Size	4 @ 16 AWG, A PH
Motor Lead Termination	Flying Leads
Motor Standards	NEMA
Motor Type	3524L
Mounting Arrangement	F1
Number of Poles	2
Overall Length	13.29 IN
Power Factor	85
Product Family	General Purpose
Pulley End Bearing Type	Ball
Pulley Face Code	Standard
Pulley Shaft Indicator	Standard
Rodent Screen	None
RoHS Status	ROHS COMPLIANT
Service Factor	1.15
Shaft Diameter	0.875 IN
Shaft Extension Location	Pulley End
Shaft Ground Indicator	No Shaft Grounding
Shaft Rotation	Reversible
Shaft Slinger Indicator	No Slinger
Speed	3450 rpm
Speed Code	Single Speed
Starting Method	Direct on line
Thermal Device - Bearing	None
Thermal Device - Winding	None
Vibration Sensor Indicator	No Vibration Sensor
Winding Thermal 1	None

Winding Thermal 2

None

---

## Nameplate

NP1256L									
CAT.NO.	L3513T								
SPEC.	35Y521Y748G1								
HP	1.5								
VOLTS	115/230								
AMP	16/8								
RPM	3450								
FRAME	143T		HZ	60			PH	1	
SER.F.	1.15	CODE	J	DES	L	CLASS		B	
NEMA-NOM-EFF	70	PF	85						
RATING	40C AMB-CONT								
CC									
DE	6205		ODE	6203					
ENCL	TEFC	SN							

**Accessories**

<b>Part number</b>	<b>Description</b>	<b>Multiplier</b>
35-8762	C FACE KIT	A8
35EP1506A01SP	D-FLANGE KIT	A8

## AC Induction Motor Performance Data

Record # 10315

Typical performance - not guaranteed values

Winding: 35WGY748-R001			Type: 3524L		Enclosure: TEFC		
Nameplate Data				230 V, 60 Hz: High Voltage Connection			
Rated Output (HP)		1.5		Full Load Torque		2.25 LB-FT	
Volts		115/230		Start Configuration		direct on line	
Full Load Amps		16/8		Breakdown Torque		5.4 LB-FT	
R.P.M.		3450		Pull-up Torque		5 LB-FT	
Hz	60	Phase	1	Locked-rotor Torque		6.4 LB-FT	
NEMA Design Code		L	KVA Code	J	Starting Current		50 A
Service Factor (S.F.)		1.15		No-load Current		3.9 A	
NEMA Nom. Eff.		70	Power Factor	85	Line-line Res. @ 25°C		1.58 Ω A Ph 1.29 Ω B Ph
Rating - Duty		40C AMB-CONT		Temp. Rise @ Rated Load		80°C	
S.F. Amps				Temp. Rise @ S.F. Load		90°C	

## Load Characteristics 230 V, 60 Hz, 1.5 HP

% of Rated Load	25	50	75	100	125	150	S.F.
Power Factor	50	68	78	85	89	90	87
Efficiency	56	68	70	70	67	64	69.5
Speed	3560	3530	3490	3450	3395	3335	3430
Line amperes	4.3	5.2	6.3	8	9.8	11.8	9

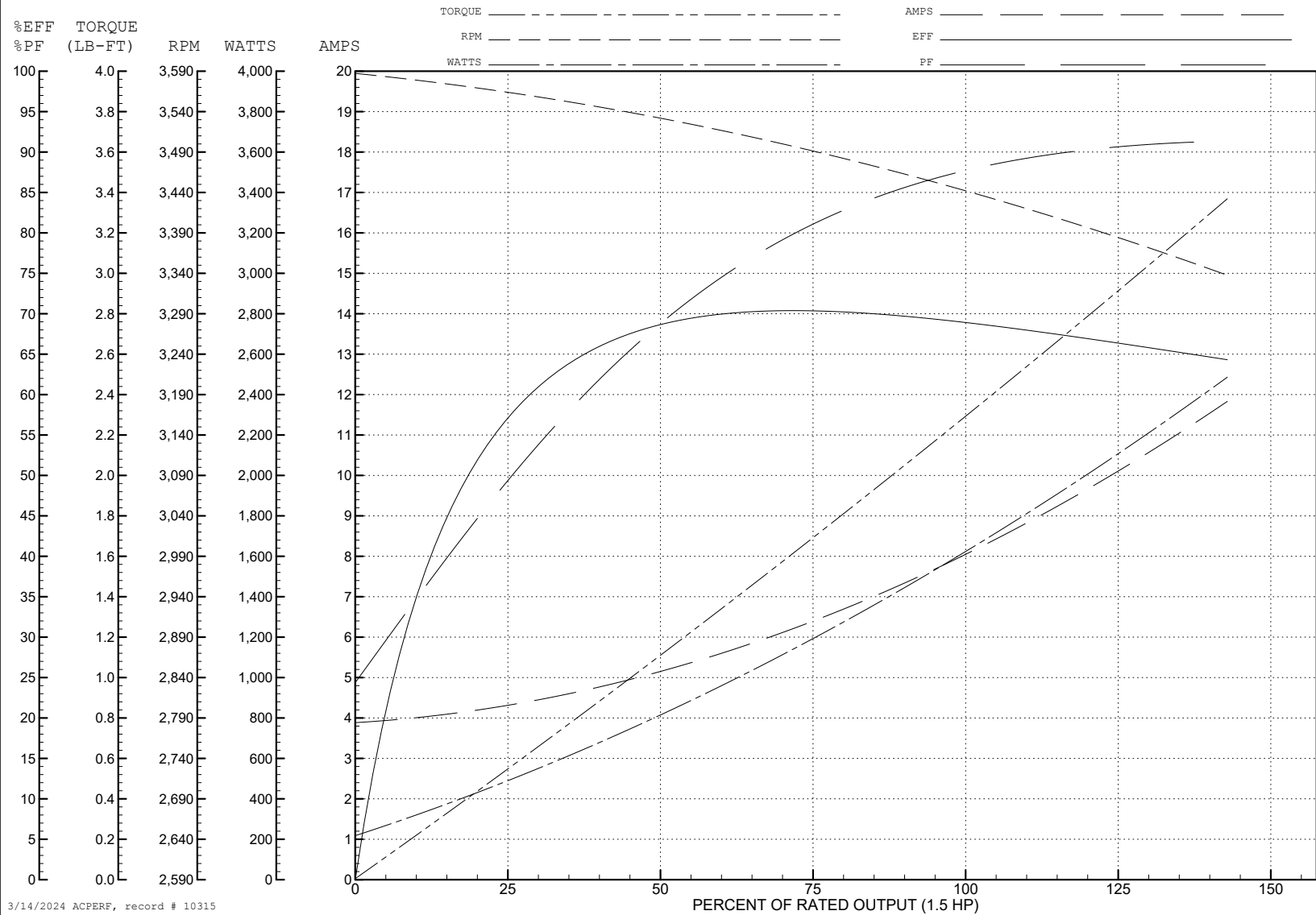
ABB Motors and Mechanical Inc.

WINDING # 35WGY748

Typical performance - not guaranteed values.

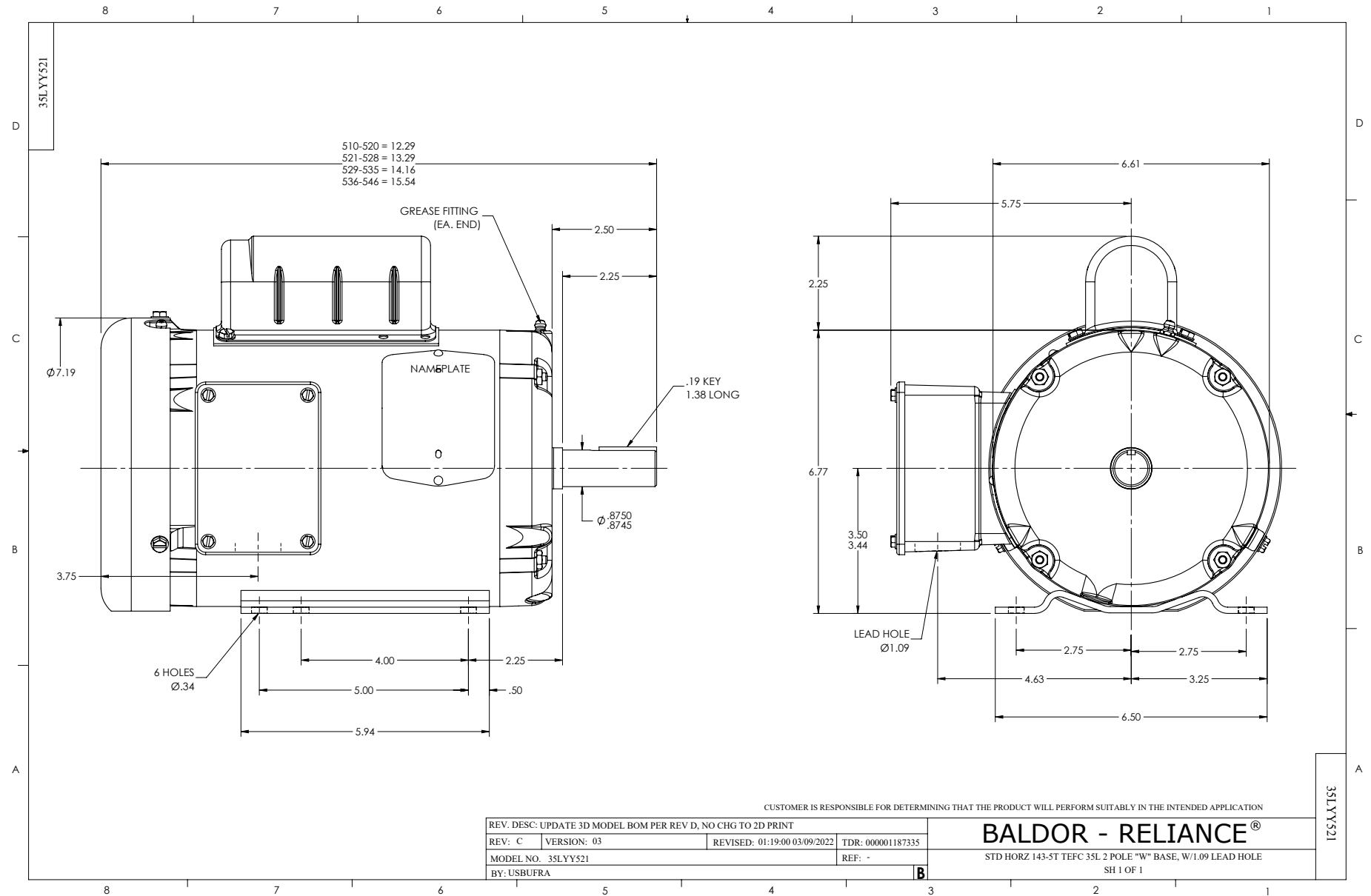
1.5 HP 1 PH 60 HZ 3450 RPM 230 V 3524L

TORQUES (LB-FT) : PO=5.4 PU=5 LR=6.4 LRA=50



3/14/2024 ACPERF, record # 10315





CD0001

