



Customer information packet

CEM3583T-5

1.5HP, 3500RPM, 3PH, 60HZ, 143TC, 0520M, TEFC

Class - None

Division - Not Applicable

Specifications

Enclosure	TEFC
Frame	143TC
Frame Material	Iron
Frequency	60.00 Hz
Motor Letter Type	Three Phase
Output @ Frequency	1.500 HP @ 60 HZ
Phase	3
Synchronous Speed @ Frequency	3600 RPM @ 60 HZ
Voltage @ Frequency	575.0 V @ 60 HZ
XP Class and Group	None
XP Division	Not Applicable
Agency Approvals	NEMA_PREMIUM CURUSEEV NEMA PREMIUM
Ambient Temperature	40 °C
Auxillary Box	No Auxillary Box
Auxillary Box Lead Termination	None
Base Indicator	Rigid
Bearing Grease Type	Polyrex EM (-20F +300F)
Blower	None
Current @ Voltage	1.500 A @ 575.0 V
Design Code	B
Drip Cover	No Drip Cover
Duty Rating	CONT
Efficiency @ 100% Load	84.0 %
Electrically Isolated Bearing	Not Electrically Isolated
Feedback Device	NO FEEDBACK
Front Face Code	Standard
Front Shaft Indicator	None
Heater Indicator	No Heater
High Voltage Full Load Amps	1.5 a
Insulation Class	F

Part detail

Revision	Q
Type	AC
Mech. spec.	05C052
Base	
Status	PRD/A
Elec. spec.	05WGX103
Layout	05LYC052
Eff. date	06-28-2023
CD Diagram	CD0006
Poles	02
Leads	3#18
Proprietary	False
Created date	05-21-2010

Inverter Code	Inverter Ready
KVA Code	L
Lifting Lugs	Standard Lifting Lugs
Locked Bearing Indicator	Locked Bearing
Motor Lead Exit	Ko Box
Motor Lead Quantity/Wire Size	3 @ 18 AWG
Motor Lead Termination	Flying Leads
Motor Standards	NEMA
Motor Type	0520M
Mounting Arrangement	F1
Number of Poles	2
Overall Length	13.04 IN
Power Factor	85
Product Family	General Purpose
Pulley End Bearing Type	Ball
Pulley Face Code	C-Face
Pulley Shaft Indicator	Standard
Rodent Screen	None
Service Factor	1.15
Shaft Diameter	0.875 IN
Shaft Extension Location	Pulley End
Shaft Ground Indicator	No Shaft Grounding
Shaft Rotation	Reversible
Shaft Slinger Indicator	No Slinger
Speed	3500 rpm
Speed Code	Single Speed
Starting Method	Direct on line
Thermal Device - Bearing	None
Thermal Device - Winding	None
Vibration Sensor Indicator	No Vibration Sensor
Winding Thermal 1	None
Winding Thermal 2	None

Nameplate

NP1259L									
CAT.NO.	CEM3583T-5								
SPEC.	05C052X103G1								
HP	1.5								
VOLTS	575								
AMP	1.5								
RPM	3500								
FRAME	143TC		HZ	60			PH	3	
SER.F.	1.15	CODE	L	DES	B	CL	F		
NEMA-NOM-EFF	84	PF	85						
RATING	40C AMB-CONT								
CC	010A								
DE	6205		ODE	6203					
ENCL	TEFC	SN							

AC Induction Motor Performance Data

Record # 31308

Typical performance - not guaranteed values

Winding: 05WGX103-R001			Type: 0520M		Enclosure: TEFC	
Nameplate Data				575 V, 60 Hz: Single Voltage Motor		
Rated Output (HP)		1.5		Full Load Torque		2.22 LB-FT
Volts		575		Start Configuration		direct on line
Full Load Amps		1.5		Breakdown Torque		9.55 LB-FT
R.P.M.		3500		Pull-up Torque		3.64 LB-FT
Hz	60	Phase	3	Locked-rotor Torque		7.41 LB-FT
NEMA Design Code		B		KVA Code	L	
Service Factor (S.F.)		1.15		Starting Current		14.5 A
NEMA Nom. Eff.		84		Power Factor	85	
Rating - Duty		40C		AMB-CONT		Temp. Rise @ Rated Load
S.F. Amps				Temp. Rise @ S.F. Load		51°C

Load Characteristics 575 V, 60 Hz, 1.5 HP

% of Rated Load	25	50	75	100	125	150	S.F.
Power Factor	44	66	78	85	89	90	87
Efficiency	72.1	82.1	84.3	84.7	84.3	82.8	84.5
Speed	3575	3552	3527	3499	3468	3434	3480
Line amperes	0.839	1.01	1.25	1.54	1.85	2.24	1.73

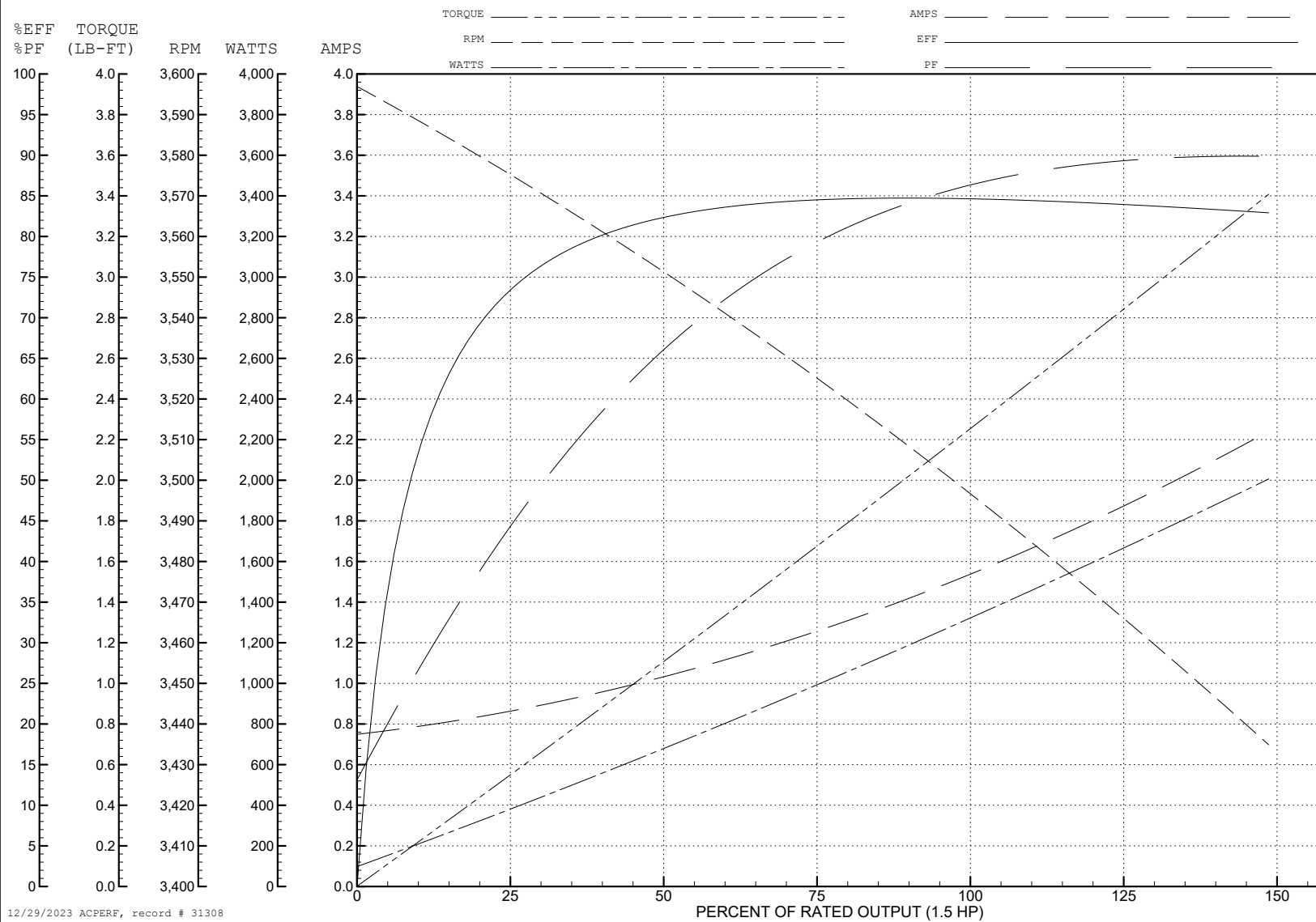
ABB Motors and Mechanical Inc.

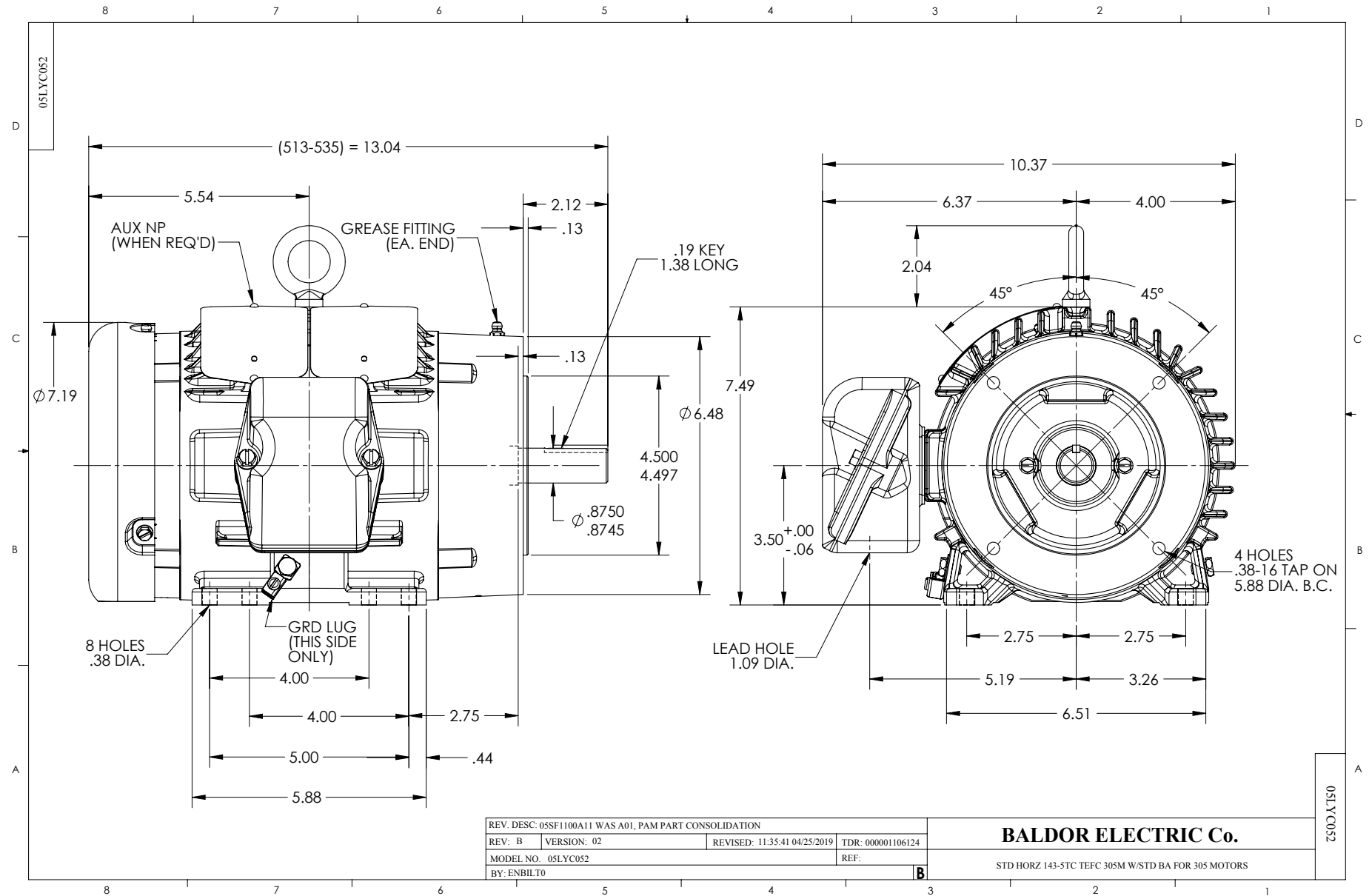
WINDING # 05WGX103

Typical performance - not guaranteed values.

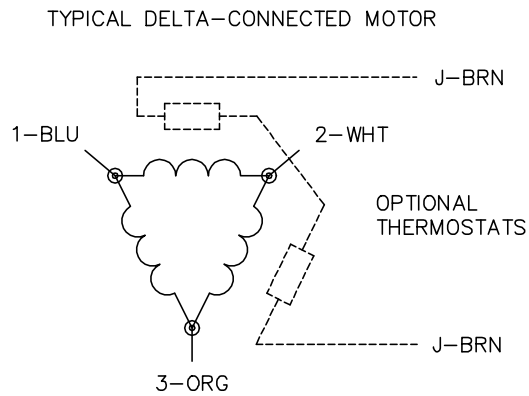
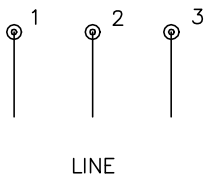
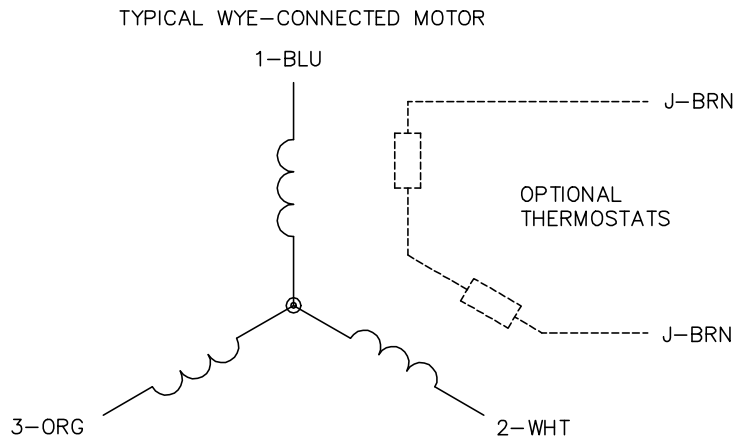
1.5 HP 3 PH 60 HZ 3500 RPM 575 V 0520M

TORQUES (LB-FT): PO=9.55 PU=3.64 LR=7.41 LRA=14.5





CD0006



- NOTES:
- 1. THREE LEAD MOTOR MAY BE EITHER WYE CONNECTED OR DELTA CONNECTED.
 - 2. INTERCHANGE ANY TWO LINE LEADS TO REVERSE ROTATION.
 - 3. OPTIONAL THERMOSTATS ARE PROVIDED WHEN SPECIFIED.
 - 4. ACTUAL NUMBER OF INTERNAL PARALLEL CIRCUITS MAY VARY.
 - 5. LEAD COLORS ARE OPTIONAL. LEADS MUST BE NUMBERED AS SHOWN.

CD0006

REV. DESC: ADD CLASS CONN00000007		
REV. LTR: E	VERSION: 01	TDR: 000001099922
FILE: \AAA\00005\141	REVISED: 10: 24: 49 02/19/2019	BY: ENBRIRO
MTL: —		

BALDOR - RELIANCE®

3PH, SV, 3 LEADS, WYE OR DELTA CONNECTED

SH 1 of 1