



Customer information packet

L5022

.75HP, 1140RPM, 1PH, 60HZ, 56, 3540L, XPFC, F1

Class - CLI GP D

Division - Division I

Specifications

Enclosure	XPFC
Frame	56
Frame Material	Steel
Frequency	60.00 Hz
Motor Letter Type	Cap Start, Induction Run
Output @ Frequency	.750 HP @ 60 HZ
Phase	1
Synchronous Speed @ Frequency	1200 RPM @ 60 HZ
Voltage @ Frequency	230.0 V @ 60 HZ 208.0 V @ 60 HZ 115.0 V @ 60 HZ
XP Class and Group	CLI GP D
XP Division	Division I
Agency Approvals	CSA UL
Ambient Temperature	40 °C
Auxillary Box	No Auxillary Box
Auxillary Box Lead Termination	None
Base Indicator	Rigid
Bearing Grease Type	Polyrex EM (-20F +300F)
Blower	None
Current @ Voltage	5.700 A @ 208.0 V 5.400 A @ 230.0 V 10.800 A @ 115.0 V
Design Code	L
Drip Cover	No Drip Cover
Duty Rating	CONT
Efficiency @ 100% Load	68.0 %
Electrically Isolated Bearing	Not Electrically Isolated
Feedback Device	NO FEEDBACK
Front Face Code	Standard
Front Shaft Indicator	None

Part detail

Revision	J
Type	AC
Mech. spec.	35E351
Base	
Status	NLA/A
Elec. spec.	35WGN636
Layout	35LYE351
Eff. date	01-18-2023
CD Diagram	CD0001
Poles	06
Leads	6#18
Proprietary	False
Created date	11-30-2012

Heater Indicator	No Heater
High Voltage Full Load Amps	5.4 a
Insulation Class	B
Inverter Code	Not Inverter
KVA Code	K
Lifting Lugs	No Lifting Lugs
Locked Bearing Indicator	No Locked Bearing
Motor Lead Exit	Ko Box
Motor Lead Quantity/Wire Size	6 @ 18 AWG
Motor Lead Termination	Flying Leads
Motor Standards	NEMA
Motor Type	3540L
Mounting Arrangement	F1
Number of Poles	6
Overall Length	17.42 IN
Power Factor	65
Product Family	General Purpose
Pulley End Bearing Type	Ball
Pulley Face Code	Standard
Pulley Shaft Indicator	Standard
Rodent Screen	None
Service Factor	1.00
Shaft Diameter	0.625 IN
Shaft Extension Location	Pulley End
Shaft Ground Indicator	No Shaft Grounding
Shaft Rotation	Reversible
Shaft Slinger Indicator	No Slinger
Speed	1140 rpm
Speed Code	Single Speed
Starting Method	Direct on line
Thermal Device - Bearing	None
Thermal Device - Winding	Normally Closed Thermostat
Vibration Sensor Indicator	No Vibration Sensor
Winding Thermal 1	None

Winding Thermal 2	None
XP Temp Code	T2C

Nameplate

NP0015XPSL					
NO.		CC			
SER. #					
SPEC	35E351N636G1				
CAT.NO.	L5022				
H.P.	.75	T. CODE	T2C		
VOLTS	115/208-230				
AMPS	10.8/5.7-5.4				
R.P.M.	1140				
HZ	60	PH	1	CLASS	B
SER.F.	1.00	DES	L	CODE	K
RATING	40C AMB-CONT				
FRAME	56	NEMA NOM. EFF			68
PF	65				
BLANK					

AC Induction Motor Performance Data

Record # 40729

Typical performance - not guaranteed values

Winding: 35WGN636-R001			Type: 3540L		Enclosure: XPFC	
Nameplate Data			230 V, 60 Hz: High Voltage Connection			
Rated Output (HP)		.75	Full Load Torque		3.42 LB-FT	
Volts		115/208-230	Start Configuration		direct on line	
Full Load Amps		10.8/5.7-5.4	Breakdown Torque		7.63 LB-FT	
R.P.M.		1140	Pull-up Torque		6.93 LB-FT	
Hz	60	Phase	1	Locked-rotor Torque	8.78 LB-FT	
NEMA Design Code	L	KVA Code	K	Starting Current	28.3 A	
Service Factor (S.F.)			1	No-load Current	3.81 A	
NEMA Nom. Eff.	68	Power Factor	65	Line-line Res. @ 25°C	2.879 Ω A Ph 2.6174 Ω B Ph	
Rating - Duty		40C AMB-CONT		Temp. Rise @ Rated Load	70°C	

Load Characteristics 230 V, 60 Hz, 0.75 HP

% of Rated Load	25	50	75	100	125	150
Power Factor	31	46	57	65	71	76
Efficiency	49.5	62.8	67.8	68.7	67.2	63.4
Speed	1187.4	1177.7	1166.1	1152.9	1137.5	1114.3
Line amperes	3.94	4.24	4.73	5.42	6.32	7.57

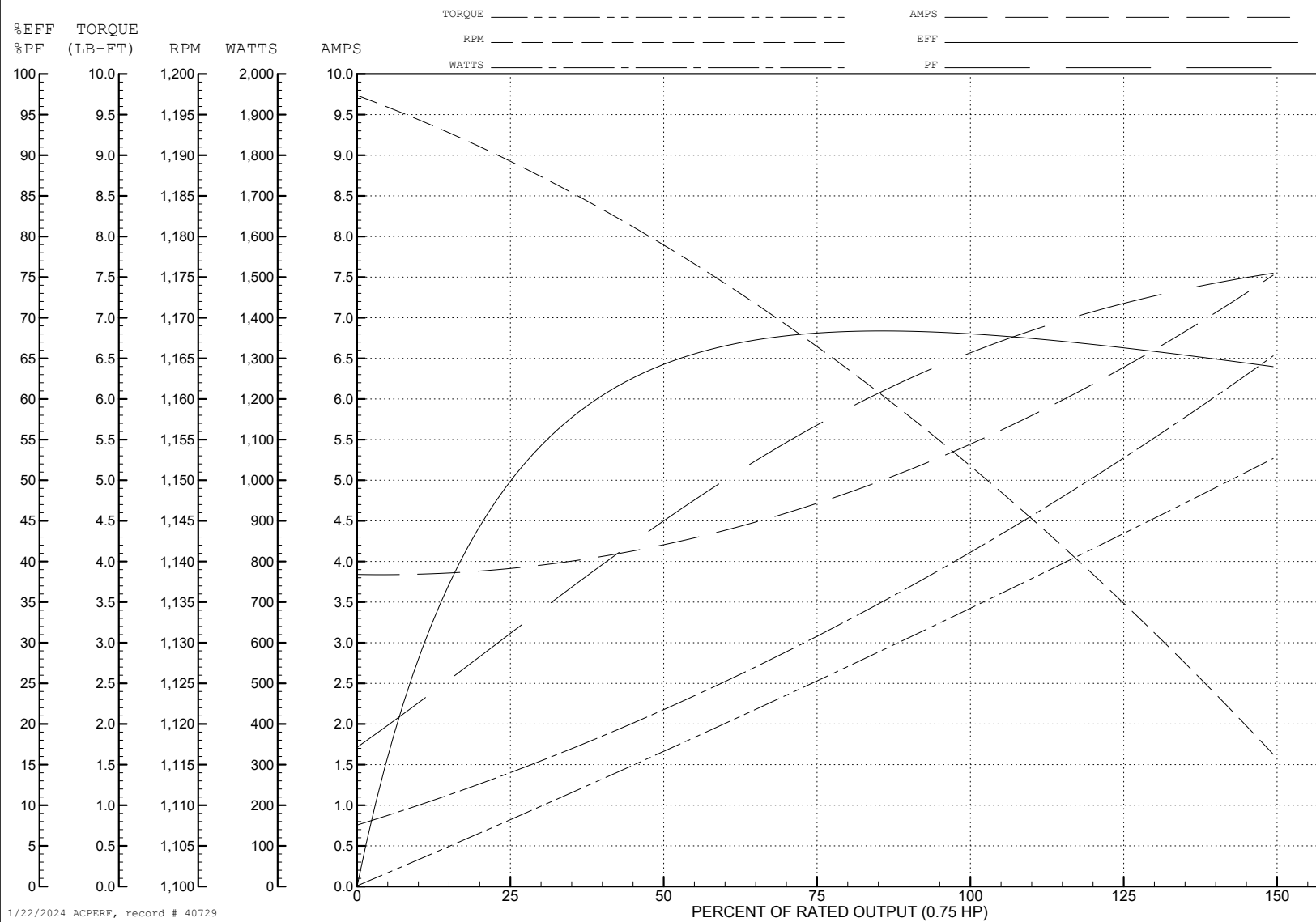
ABB Motors and Mechanical Inc.

WINDING # 35WGN636

Typical performance - not guaranteed values.

0.75 HP 1 PH 60 HZ 1140 RPM 230 V 3540L

TORQUES (LB-FT) : PO=7.63 PU=6.93 LR=8.78 LRA=28.3



AC Induction Motor Performance Data

Record # 40730

Typical performance - not guaranteed values

Winding: 35WGN636-R001			Type: 3540L		Enclosure: XPFC		
Nameplate Data			208 V, 60 Hz: High Voltage Connection				
Rated Output (HP)		.75	Full Load Torque		3.48 LB-FT		
Volts		115/208-230	Start Configuration		direct on line		
Full Load Amps		10.8/5.7-5.4	Breakdown Torque		6.24 LB-FT		
R.P.M.		1140	Pull-up Torque		5.67 LB-FT		
Hz	60	Phase	1	Locked-rotor Torque		7.18 LB-FT	
NEMA Design Code		L	KVA Code	K	Starting Current		25.6 A
Service Factor (S.F.)			1	No-load Current		3.35 A	
NEMA Nom. Eff.		68	Power Factor	65	Line-line Res. @ 25°C		2.879 Ω A Ph 2.6174 Ω B Ph
Rating - Duty			40C AMB-CONT	Temp. Rise @ Rated Load		78°C	

Load Characteristics 208 V, 60 Hz, 0.75 HP

% of Rated Load	25	50	75	100	125	150
Power Factor	35	52	64	72	77	78
Efficiency	53.2	65.7	68	66	60	46.9
Speed	1186.1	1172.1	1156.2	1136	1099.5	1028.7
Line amperes	3.51	3.96	4.67	5.68	7.32	9.95

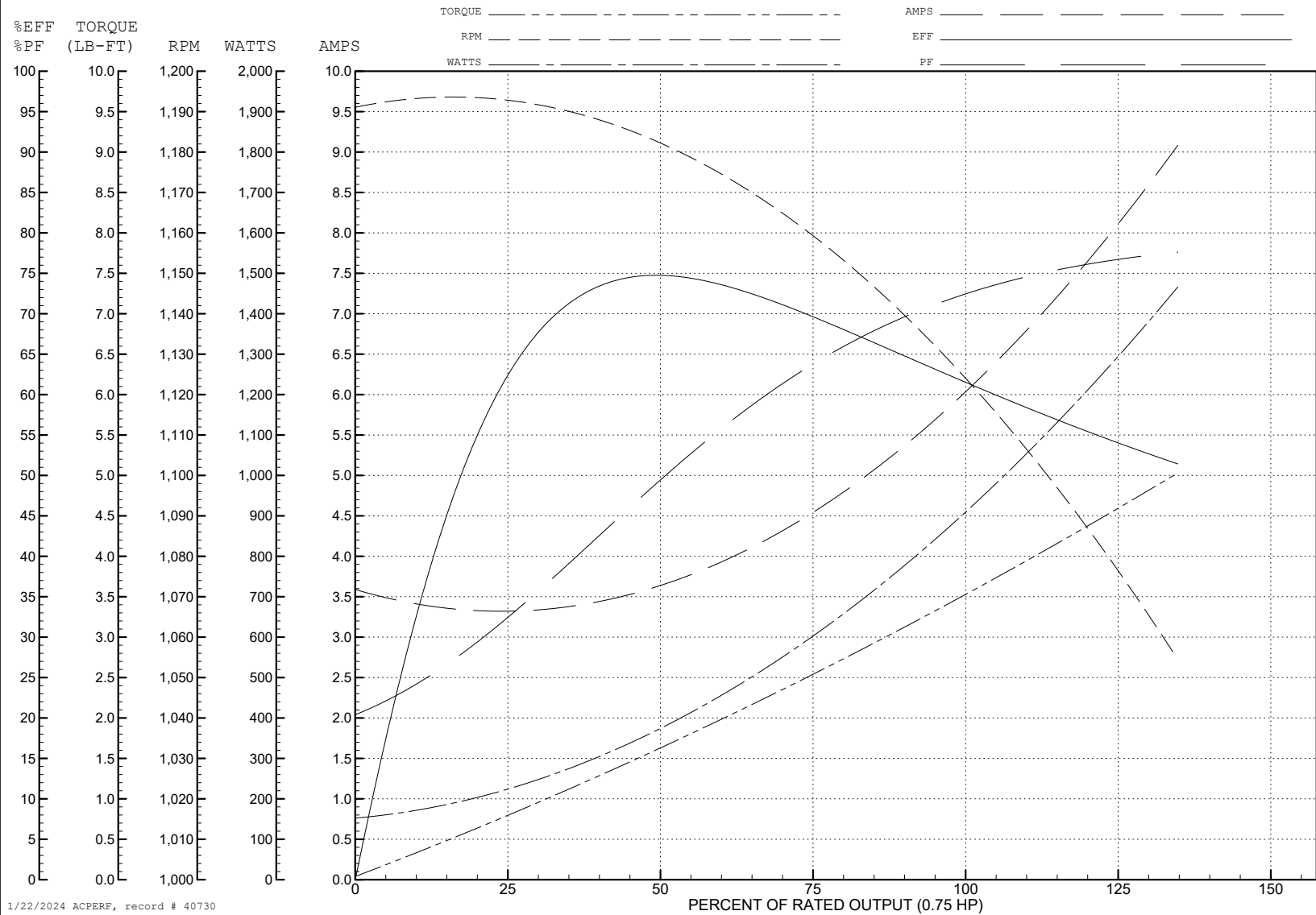
ABB Motors and Mechanical Inc.

WINDING # 35WGN636

Typical performance - not guaranteed values.

0.75 HP 1 PH 60 HZ 1140 RPM 208 V 3540L

TORQUES (LB-FT): PO=6.24 PU=5.67 LR=7.18 LRA=25.6



AC Induction Motor Performance Data

Record # 53202

Typical performance - not guaranteed values

Winding: 35WGN636-R001			Type: 3540L		Enclosure: XPFC	
Nameplate Data			115 V, 60 Hz: Low Voltage Connection			
Rated Output (HP)		.75	Full Load Torque		3.42 LB-FT	
Volts		115/208-230	Start Configuration		direct on line	
Full Load Amps		10.8/5.7-5.4	Breakdown Torque		7.63 LB-FT	
R.P.M.		1140	Pull-up Torque		6.93 LB-FT	
Hz	60	Phase	1	Locked-rotor Torque	8.78 LB-FT	
NEMA Design Code	L	KVA Code	K	Starting Current	56.6 A	
Service Factor (S.F.)			1	No-load Current	7.62 A	
NEMA Nom. Eff.	68	Power Factor	65	Line-line Res. @ 25°C	0.711 Ω A Ph 2.67 Ω B Ph	
Rating - Duty		40C AMB-CONT		Temp. Rise @ Rated Load	70°C	
				Locked-rotor Power Factor	88.1	
				Rotor inertia	0.237 LB-FT ²	

Load Characteristics 115 V, 60 Hz, 0.75 HP

% of Rated Load	25	50	75	100	125	150
Power Factor	31	46	57	66	72	76
Efficiency	49.5	63.1	67.6	68.8	67.2	63.5
Speed	1187	1178	1166	1153	1138	1114
Line amperes	7.88	8.48	9.46	10.8	12.6	15.1

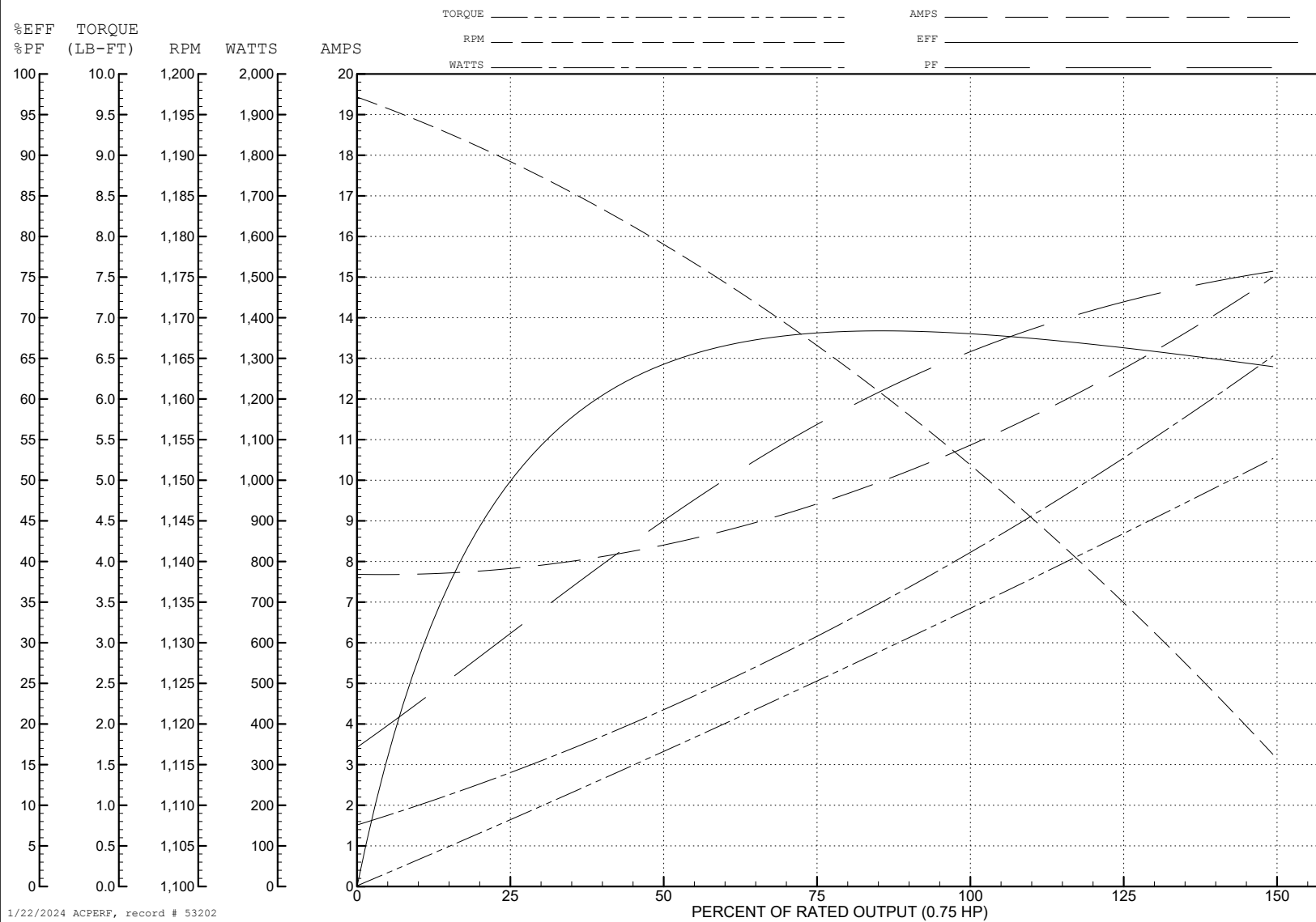
ABB Motors and Mechanical Inc.

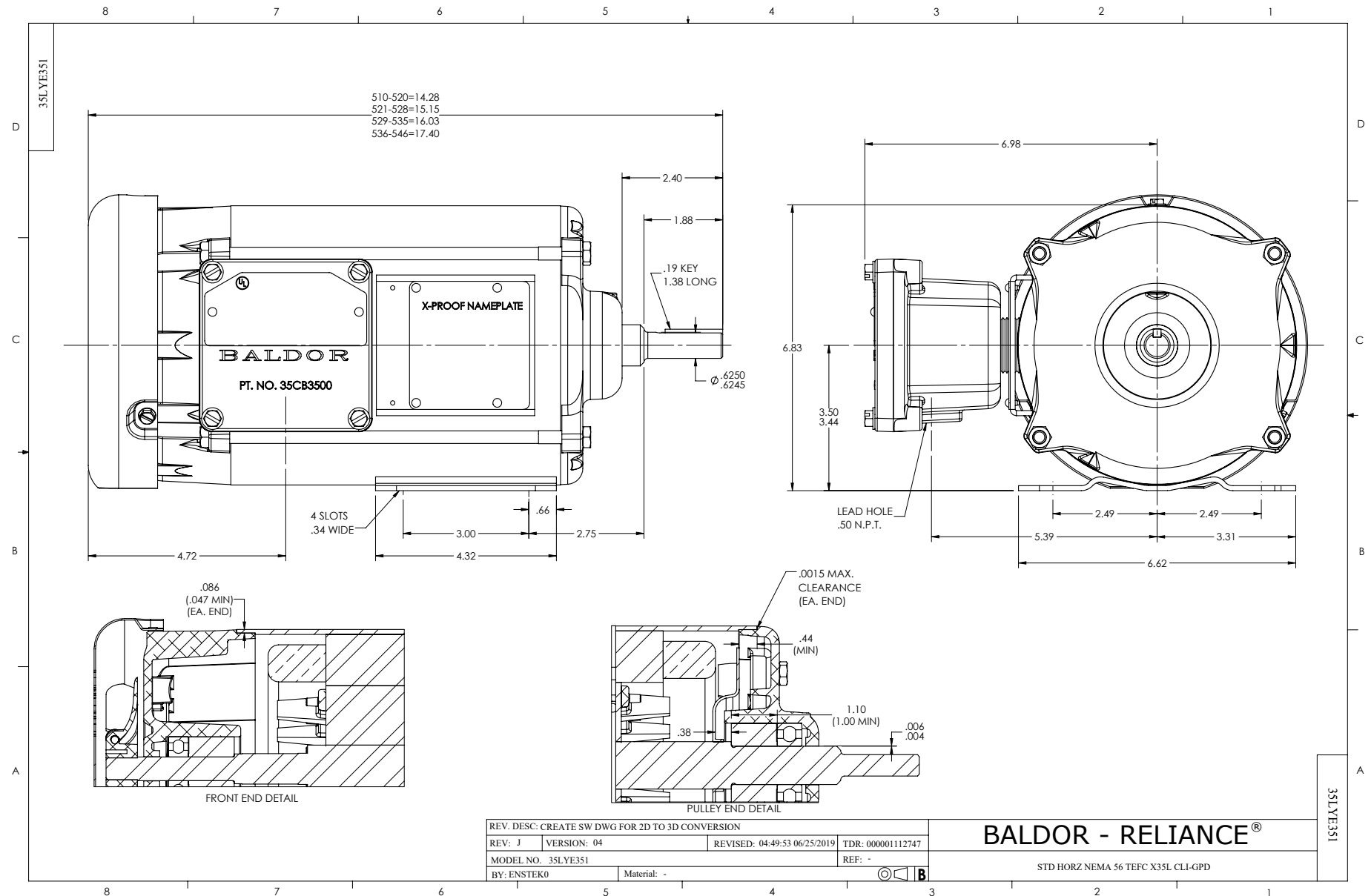
WINDING # 35WGN636

Typical performance - not guaranteed values.

0.75 HP 1 PH 60 HZ 1140 RPM 115 V 3540L

TORQUES (LB-FT) : PO=7.63 PU=6.93 LR=8.78 LRA=56.6





CD0001

