



Customer information packet

ECP3586T

2HP, 3450RPM, 3PH, 60HZ, 145T, 0532M, TEFC, F1

Class - CLI GP A,B,C,D

Division - Division II

Specifications

Enclosure	TEFC
Frame	145T
Frame Material	Iron
Frequency	60.00 Hz
Motor Letter Type	Three Phase
Output @ Frequency	2.000 HP @ 60 HZ
Phase	3
Synchronous Speed @ Frequency	3600 RPM @ 60 HZ
Voltage @ Frequency	208.0 V @ 60 HZ 230.0 V @ 60 HZ 460.0 V @ 60 HZ
XP Class and Group	CL I GP A,B,C,D
XP Division	Division II
Agency Approvals	CCSA US CSA EEV NEMA PREMIUM NEMA_PREMIUM UR
Ambient Temperature	40 °C
Auxillary Box	No Auxillary Box
Auxillary Box Lead Termination	None
Base Indicator	Rigid
Bearing Grease Type	Polyrex EM (-20F +300F)
Blower	None
Constant Torque Speed Range	6
Current @ Voltage	5.000 A @ 230.0 V 5.400 A @ 208.0 V 2.500 A @ 460.0 V
Design Code	B
Drip Cover	No Drip Cover
Duty Rating	CONT
Efficiency @ 100% Load	86.5 %

Part detail

Revision	Z
Type	AC
Mech. spec.	05F008
Base	
Status	PRD/A
Elec. spec.	05WGW115
Layout	05LYF008
Eff. date	07-17-2023
CD Diagram	CD0005
Poles	02
Leads	9#18
Proprietary	False
Created date	02-24-2009

Electrically Isolated Bearing	Not Electrically Isolated
Feedback Device	NO FEEDBACK
Front Face Code	Standard
Front Shaft Indicator	None
Heater Indicator	No Heater
High Voltage Full Load Amps	2.5 a
Insulation Class	F
Inverter Code	Inverter Ready
KVA Code	N
Lifting Lugs	Standard Lifting Lugs
Locked Bearing Indicator	No Locked Bearing
Max Speed	5400 rpm
Motor Lead Exit	Ko Box
Motor Lead Quantity/Wire Size	9 @ 18 AWG
Motor Lead Termination	Flying Leads
Motor Standards	NEMA
Motor Type	0532M
Mounting Arrangement	F1
Number of Poles	2
Overall Length	12.88 IN
Power Factor	85
Product Family	Super-E Chemical Processing
Pulley End Bearing Type	Ball
Pulley Face Code	Standard
Pulley Shaft Indicator	Standard
Rodent Screen	None
Service Factor	1.15
Shaft Diameter	0.875 IN
Shaft Extension Location	Pulley End
Shaft Ground Indicator	No Shaft Grounding
Shaft Rotation	Reversible
Shaft Slinger Indicator	Shaft Slinger
Speed	3450 rpm
Speed Code	Single Speed

Starting Method	Direct on line
Thermal Device - Bearing	None
Thermal Device - Winding	None
Vibration Sensor Indicator	No Vibration Sensor
Winding Thermal 1	None
Winding Thermal 2	None
XP Temp Code	T4

Nameplate

NP3258									
CAT.NO.	ECP3586T								
SPEC.	05F008W115G1								
HP	2 TE								
VOLTS	208-230/460								
AMP	5.4-5/2.5								
RPM	3450								
FRAME	145T	HZ	60	PH		3			
SER.F.	1.15	CODE	N	DES	B	CL	F		
RATING	40C AMB-CONT								
SN									
DE	6205	ODE	6205						
NEMA-NOM-EFF	86.5	PF	85						
G.MIN.EFF	84	CC	010A						
T. CODE	T4	T=	135						

NP3261			
SPEC.	05F008W115G1		
D.E. BRG.	25BC02XP30X		
O.D.E. BRG.	25BC02XP30X		
GREASE	POLYREX EM		
RPM MAX	5400	MAX. KVAR	0.23
BLANK			
INV.TYPE	PWM		
T=	135		
C HP FR	60	C HP TO	90
CT HZ FROM	6	CT HZ TO	60
VT HZ FROM	3	VT HZ TO	60
HTR-VOLTS		HTR-AMPS	
HTR-WATTS		MAX. SPACE HEATER TEMP.	

AC Induction Motor Performance Data

Record # 47132

Typical performance - not guaranteed values

Winding: 05WGW115-R026			Type: 0532M		Enclosure: TEFC	
Nameplate Data			460 V, 60 Hz: High Voltage Connection			
Rated Output (HP)		2	Full Load Torque		3 LB-FT	
Volts		208-230/460	Start Configuration		direct on line	
Full Load Amps		5.4-5/2.5	Breakdown Torque		16 LB-FT	
R.P.M.		3450	Pull-up Torque		12.5 LB-FT	
Hz	60	Phase	3	Locked-rotor Torque		16 LB-FT
NEMA Design Code		B	KVA Code		N	
Service Factor (S.F.)		1.15	Starting Current		30 A	
NEMA Nom. Eff.		86.5	Power Factor		85	
Rating - Duty		40C AMB-CONT		Temp. Rise @ Rated Load		31°C
S.F. Amps				Temp. Rise @ S.F. Load		36°C
				Rotor inertia		0.0885 LB-FT2

Load Characteristics 460 V, 60 Hz, 2 HP

% of Rated Load	25	50	75	100	125	150	S.F.
Power Factor	50	70	80	85	88	89	87
Efficiency	75.2	83.8	86.2	86.5	86.4	85.5	86.5
Speed	3571	3548	3525	3501	3476	3448	3486
Line amperes	1.28	1.65	2.09	2.55	3.08	3.64	2.9

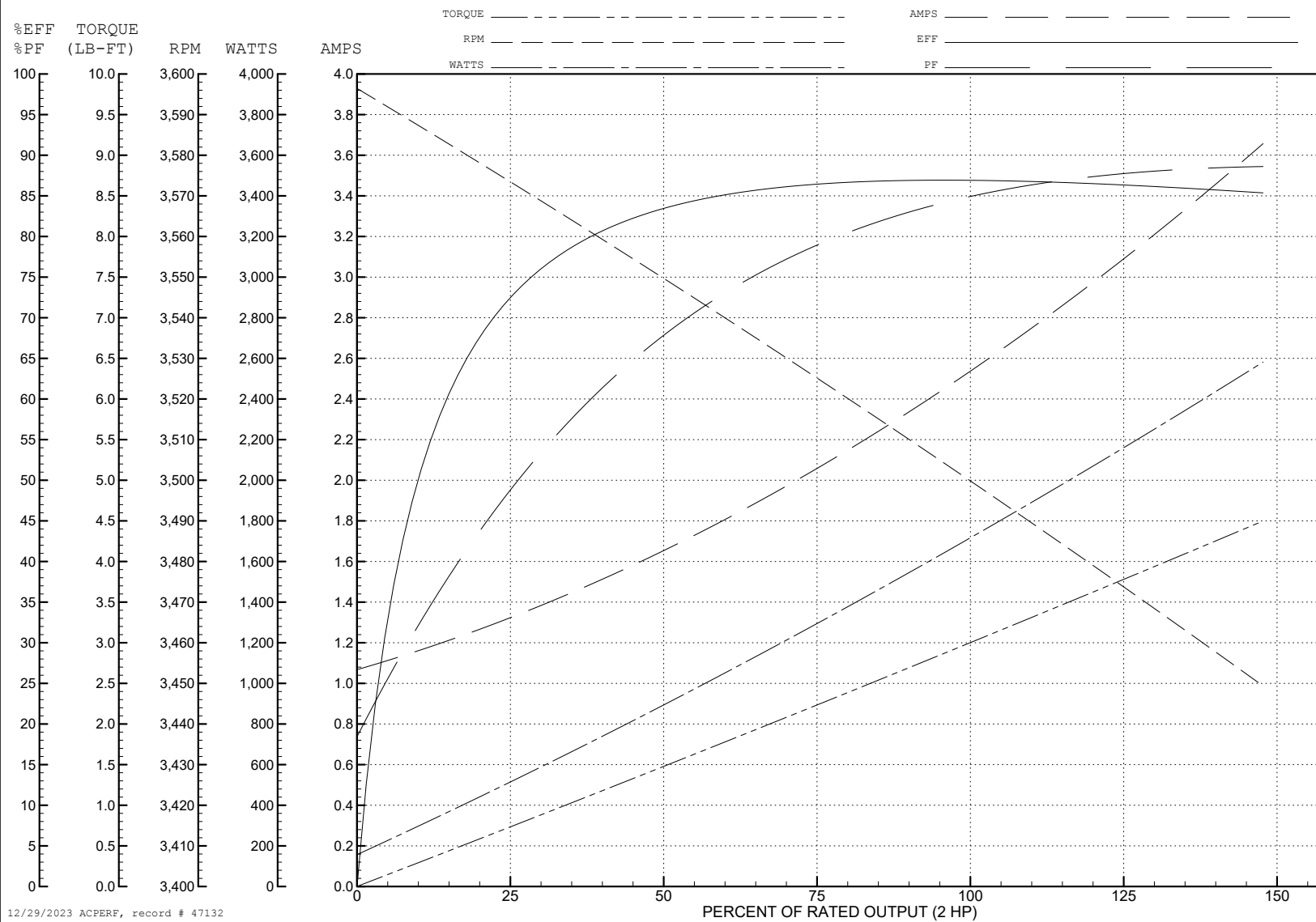
ABB Motors and Mechanical Inc.

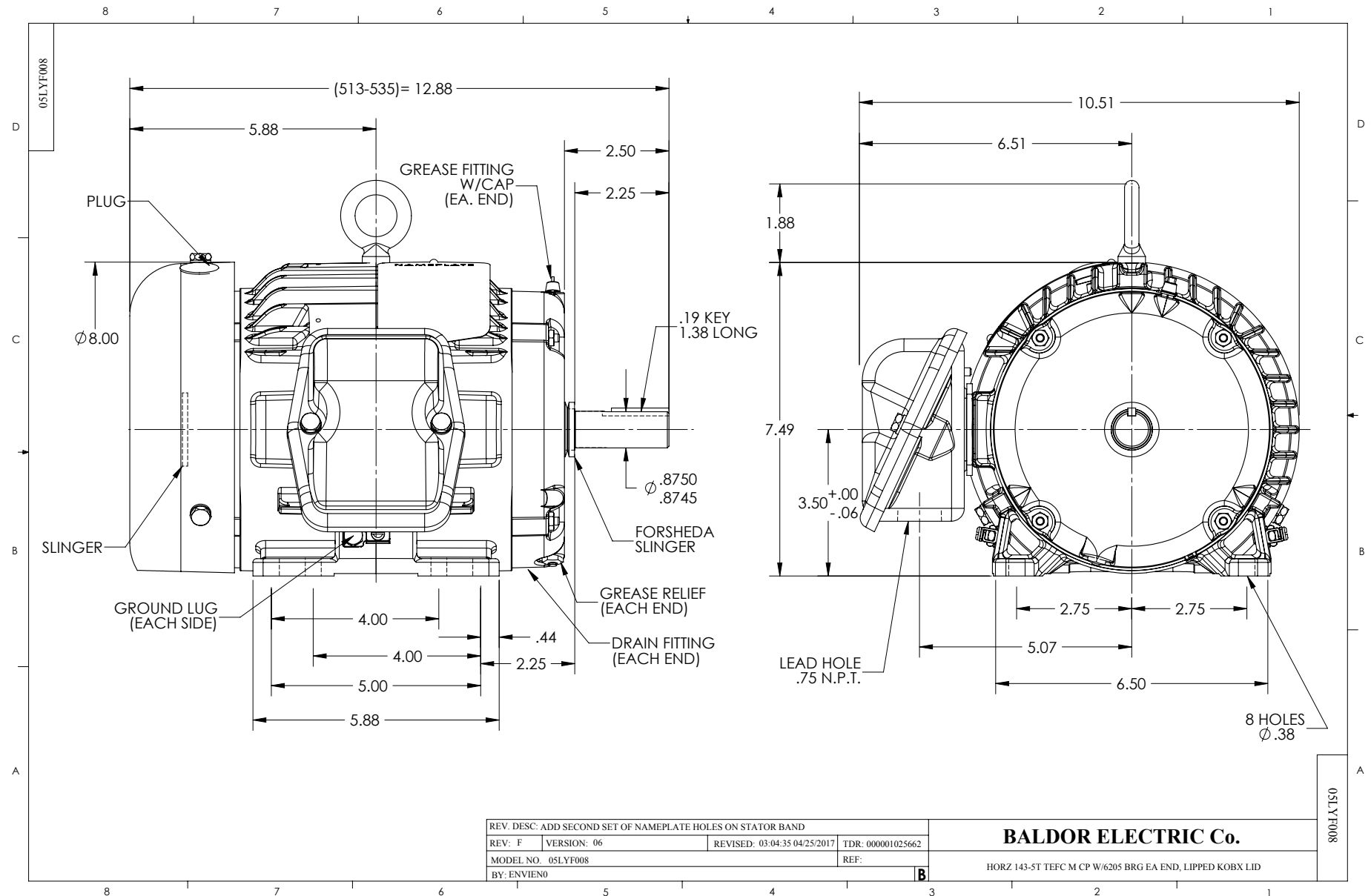
WINDING # 05WGW115

Typical performance - not guaranteed values.

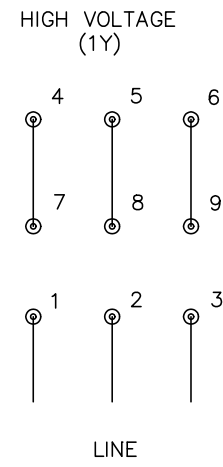
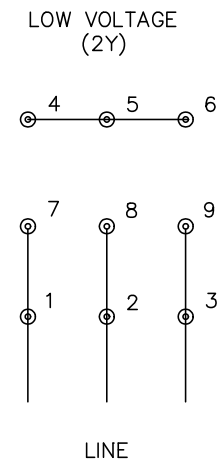
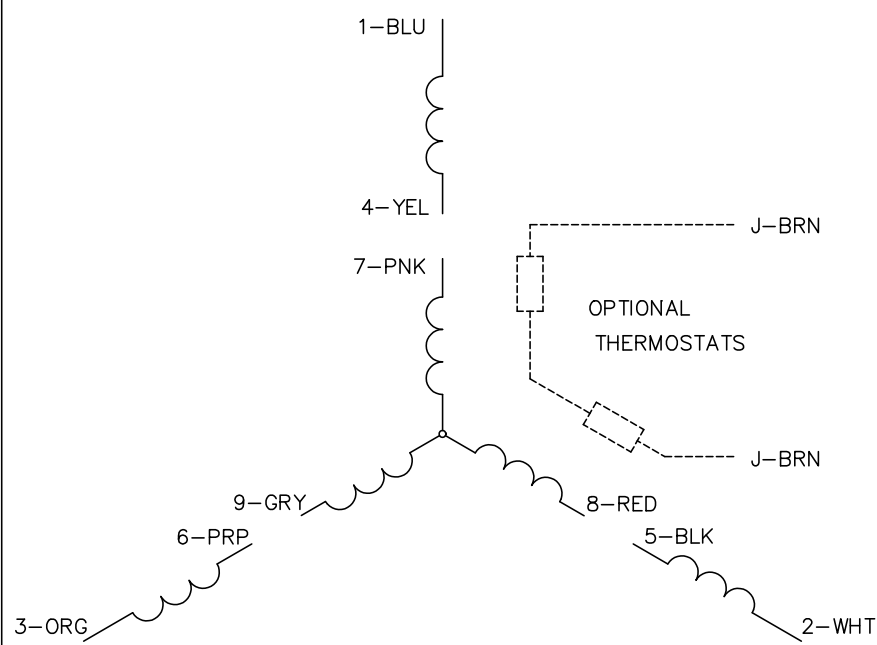
2 HP 3 PH 60 HZ 3450 RPM 460 V 0532M

TORQUES (LB-FT): PO=16 PU=12.5 LR=16 LRA=30





CD0005



- NOTES:
- 1. INTERCHANGE ANY TWO LINE LEADS TO REVERSE ROTATION.
 - 2. OPTIONAL THERMOSTATS ARE PROVIDED WHEN SPECIFIED.
 - 3. ACTUAL NUMBER OF INTERNAL PARALLEL CIRCUITS MAY BE A MULTIPLE OF THOSE SHOWN ABOVE.
 - 4. LEAD COLORS ARE OPTIONAL. LEADS MUST ALWAYS BE NUMBERED AS SHOWN.

REV. DESC: REVISE TO SHOW OPTIONAL COLORS			
REV. LTR: E	BY: JLP	REVISED: 01/19/99 10:15	TDR: 0171435
900000		FILE: AAA00005140	MDL: -
		MTL: -	

BALDOR ELECTRIC Co.

3PH, DV, 9 LEADS

CD0005