



---

# Customer information packet

## EM3610T-5

3HP, 3450RPM, 3PH, 60HZ, 182T, 3532M, TEFC, F1

Class - None

Division - Not Applicable

## Specifications

Enclosure	TEFC
Frame	182T
Frame Material	Steel
Frequency	60.00 Hz
Motor Letter Type	Three Phase
Output @ Frequency	3.000 HP @ 60 HZ
Phase	3
Synchronous Speed @ Frequency	3600 RPM @ 60 HZ
Voltage @ Frequency	575.0 V @ 60 HZ
XP Class and Group	None
XP Division	Not Applicable
Agency Approvals	NEMA PREMIUM CURUSEEV
Ambient Temperature	40 °C
Auxillary Box	No Auxillary Box
Auxillary Box Lead Termination	None
Base Indicator	Rigid
Bearing Grease Type	Polyrex EM (-20F +300F)
Blower	None
Current @ Voltage	2.900 A @ 575.0 V
Design Code	B
Drip Cover	No Drip Cover
Duty Rating	CONT
Efficiency @ 100% Load	86.5 %
Electrically Isolated Bearing	Not Electrically Isolated
Feedback Device	NO FEEDBACK
Front Face Code	Standard
Front Shaft Indicator	None
Heater Indicator	No Heater
High Voltage Full Load Amps	2.9 a
Insulation Class	F
Inverter Code	Inverter Ready

## Part detail

Revision	H
Type	AC
Mech. spec.	35L100
Base	
Status	PRD/A
Elec. spec.	35WGM839
Layout	35LYL100
Eff. date	06-28-2023
CD Diagram	CD0006
Poles	02
Leads	3#18
Proprietary	False
Created date	08-22-2013

KVA Code	L
Lifting Lugs	No Lifting Lugs
Locked Bearing Indicator	No Locked Bearing
Motor Lead Exit	Ko Box
Motor Lead Quantity/Wire Size	3 @ 18 AWG
Motor Lead Termination	Flying Leads
Motor Standards	NEMA
Motor Type	3532M
Mounting Arrangement	F1
Number of Poles	2
Overall Length	15.16 IN
Power Factor	92
Product Family	General Purpose
Pulley End Bearing Type	Ball
Pulley Face Code	Standard
Pulley Shaft Indicator	Standard
Rodent Screen	None
RoHS Status	ROHS COMPLIANT
Service Factor	1.15
Shaft Diameter	1.125 IN
Shaft Extension Location	Pulley End
Shaft Ground Indicator	No Shaft Grounding
Shaft Rotation	Reversible
Shaft Slinger Indicator	No Slinger
Speed	3450 rpm
Speed Code	Single Speed
Starting Method	Direct on line
Thermal Device - Bearing	None
Thermal Device - Winding	None
Vibration Sensor Indicator	No Vibration Sensor
Winding Thermal 1	None
Winding Thermal 2	None

## Nameplate

NP1259L											
CAT.NO.	EM3610T-5										
SPEC.	35L100M839G1										
HP	3										
VOLTS	575										
AMP	2.9										
RPM	3450										
FRAME	182T		HZ	60				PH	3		
SER.F.	1.15	CODE	L	DES	B	CL	F				
NEMA-NOM-EFF	86.5	PF	92								
RATING	40C AMB-CONT										
CC	010A										
DE	6206		ODE	6203							
ENCL	TEFC	SN									

## AC Induction Motor Performance Data

Record # 32143

Typical performance - not guaranteed values

Winding: 35WGM839-R001				Type: 3532M		Enclosure: TEFC	
Nameplate Data				575 V, 60 Hz: Single Voltage Motor			
Rated Output (HP)		3		Full Load Torque		4.5 LB-FT	
Volts		575		Start Configuration		direct on line	
Full Load Amps		2.9		Breakdown Torque		17.8 LB-FT	
R.P.M.		3450		Pull-up Torque		10.9 LB-FT	
Hz		60		Phase		3	
NEMA Design Code		B		KVA Code		L	
Service Factor (S.F.)		1.15		No-load Current		26.1 A	
NEMA Nom. Eff.		86.5		Power Factor		92	
Rating - Duty		40C		AMB-CONT		Temp. Rise @ Rated Load	
S.F. Amps						Temp. Rise @ S.F. Load	
						Locked-rotor Power Factor	
						Rotor inertia	

## Load Characteristics 575 V, 60 Hz, 3 HP

% of Rated Load	25	50	75	100	125	150	S.F.
Power Factor	58	77	86	88	89	90	89
Efficiency	83.8	87.9	88.1	87.2	85.5	83.4	86.2
Speed	3562	3531	3497	3461	3419	3373	3436
Line amperes	1.19	1.67	2.23	2.88	3.6	4.32	3.31

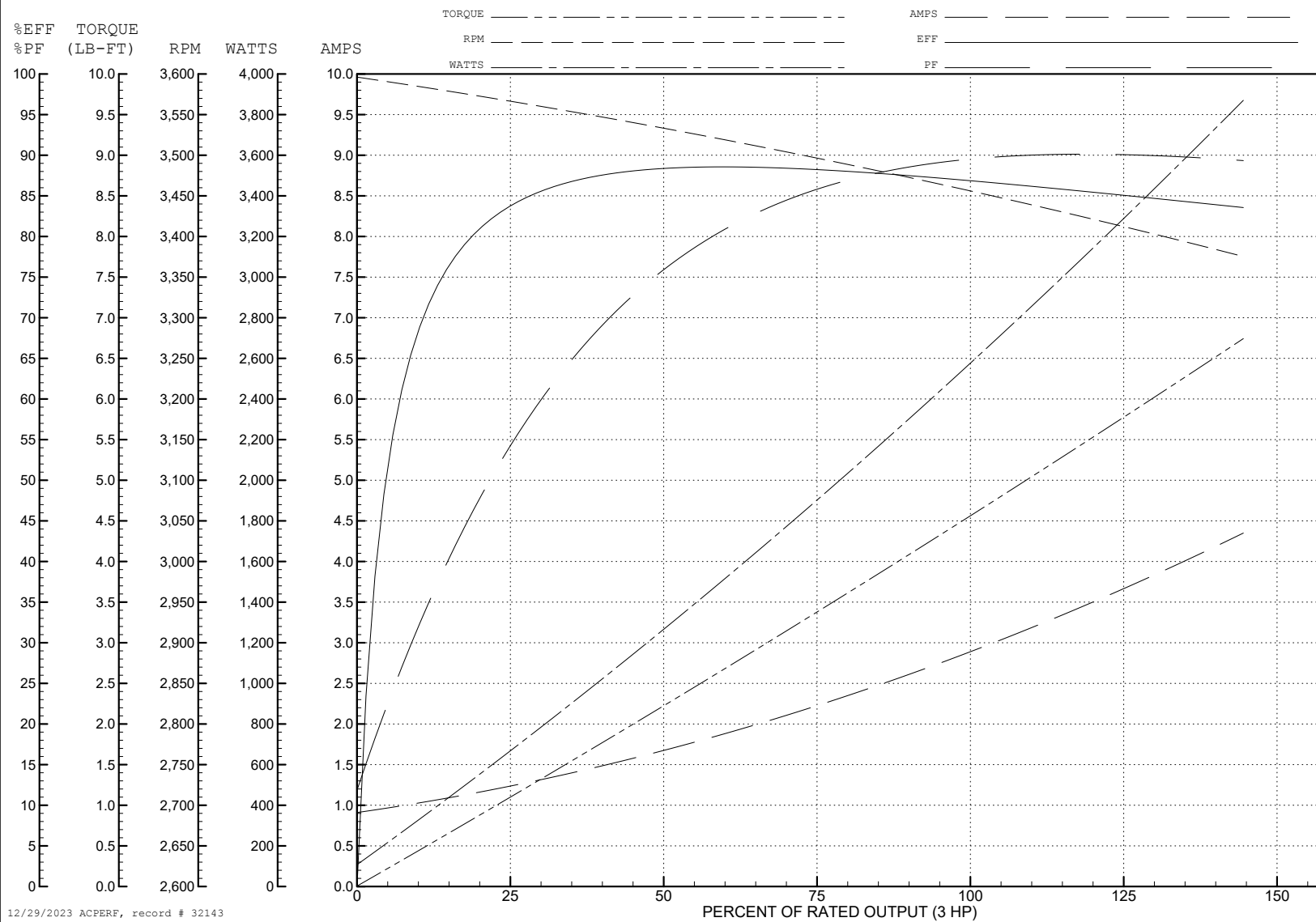
ABB Motors and Mechanical Inc.

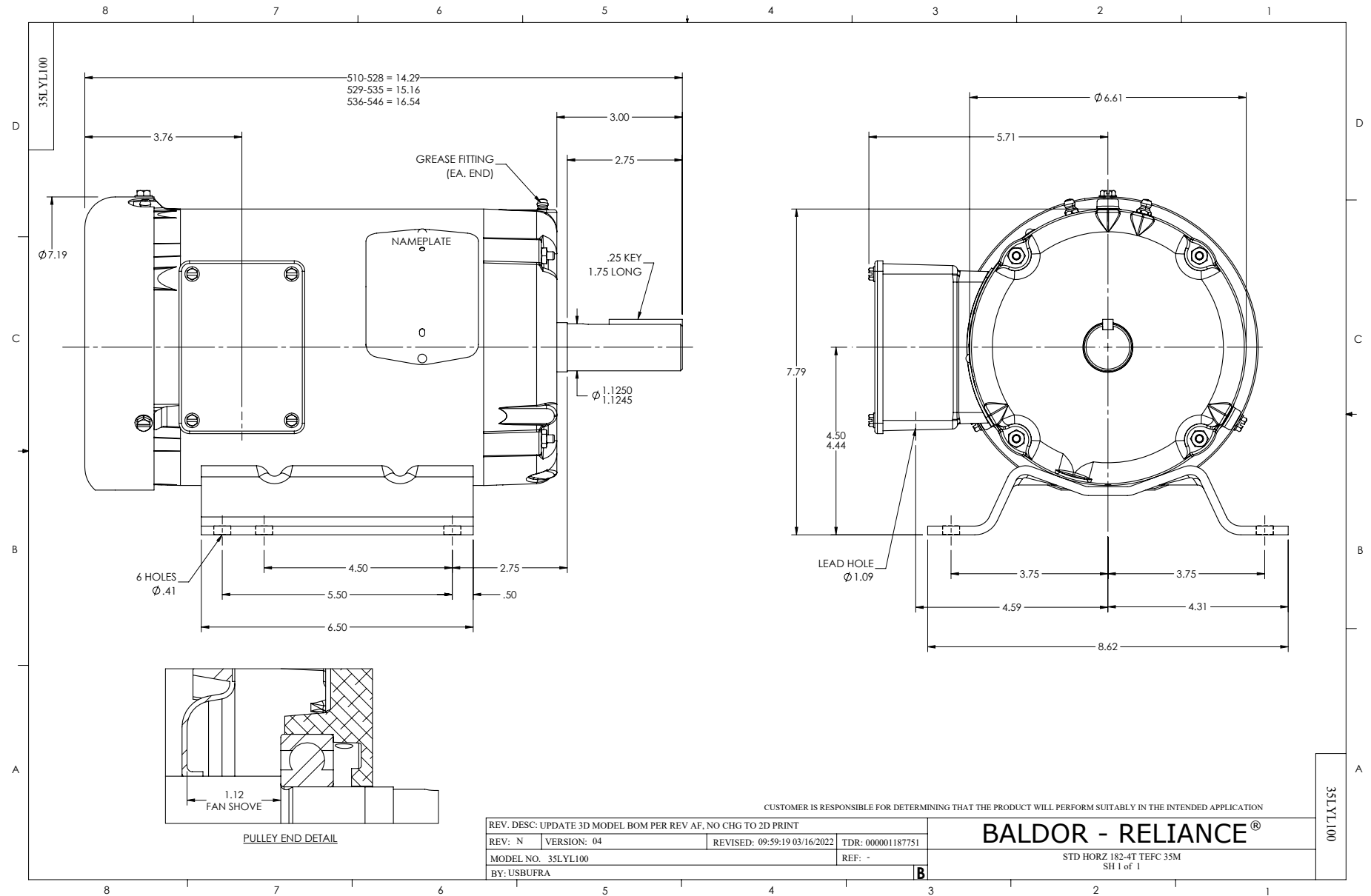
WINDING # 35WGM839

Typical performance - not guaranteed values.

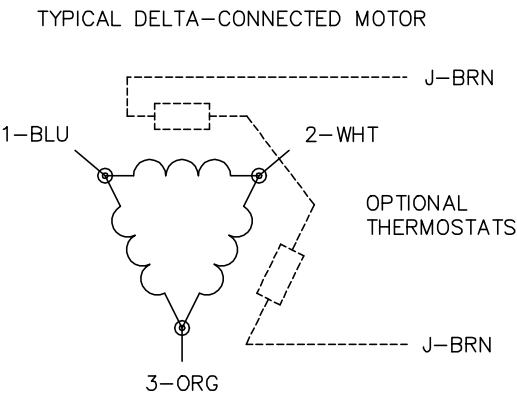
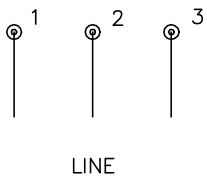
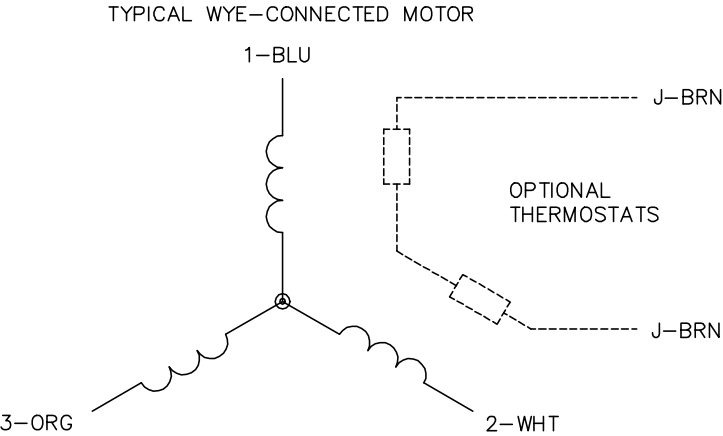
3 HP 3 PH 60 HZ 3450 RPM 575 V 3532M

TORQUES (LB-FT): PO=17.8 PU=10.9 LR=15.8 LRA=26.1





CD0006



- NOTES:
- 1. THREE LEAD MOTOR MAY BE EITHER WYE CONNECTED OR DELTA CONNECTED.
  - 2. INTERCHANGE ANY TWO LINE LEADS TO REVERSE ROTATION.
  - 3. OPTIONAL THERMOSTATS ARE PROVIDED WHEN SPECIFIED.
  - 4. ACTUAL NUMBER OF INTERNAL PARALLEL CIRCUITS MAY VARY.
  - 5. LEAD COLORS ARE OPTIONAL. LEADS MUST BE NUMBERED AS SHOWN.

CD0006

REV. DESC: ADD CLASS CONN00000007		
REV. LTR: E	VERSION: 01	TDR: 000001099922
FILE: \AAA\00005\141	REVISED: 10: 24: 49 02/19/2019	BY: ENBRIRO
MTL: —		

BALDOR - RELIANCE®

3PH, SV, 3 LEADS, WYE OR DELTA CONNECTED

SH 1 of 1