

PRODUCT INFORMATION PACKET

marathon®
Motors

Model No: 404TSTD6001

Catalog No: GT0048A

Globetrotter® General Purpose Motor, 125 & 100 HP, 3 Ph, 60 & 50 Hz, 460 & 380 V, 3600 & 3000 RPM,
404TS Frame, DP



Regal and Marathon are trademarks of Regal Rexnord Corporation or one of its affiliated companies.

©2023 Regal Rexnord Corporation, All Rights Reserved. MC017097E

RegalRexnord

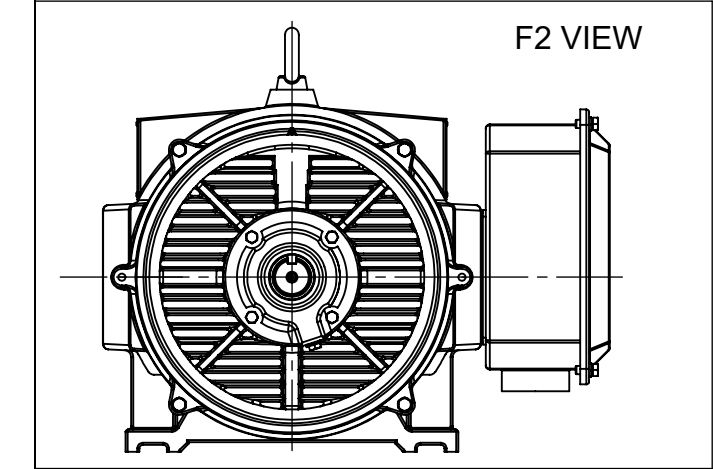
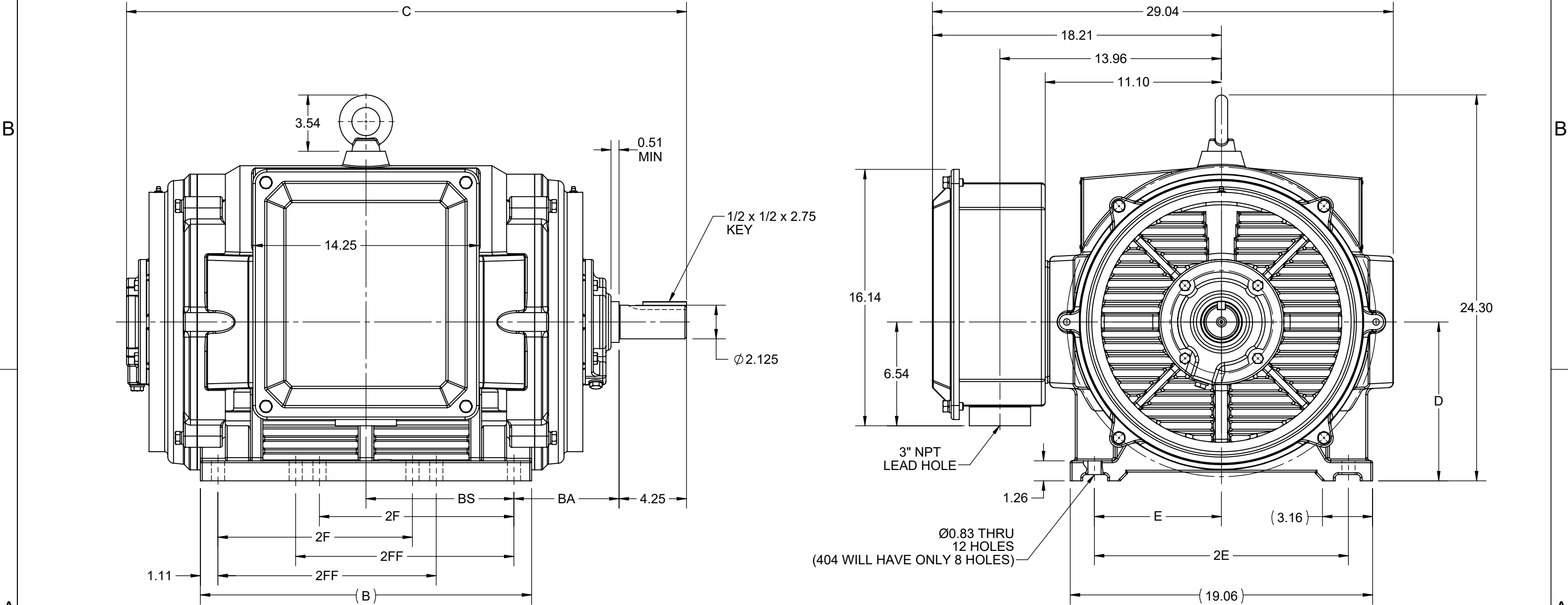
Nameplate Specifications

| | | | |
|------------------------|-----------------|----------------------------|---------------|
| Phase | 3 | Output HP | 125 & 100 Hp |
| Output KW | 93.0 & 75.0 kW | Voltage | 460 & 380 V |
| Speed | 3575 & 2975 rpm | Service Factor | 1.15 & 1.15 |
| Frame | 404TS | Enclosure | Drip Proof |
| Thermal Protection | No Protection | Efficiency | 94.1 & 94.1 % |
| Ambient Temperature | 40 °C | Frequency | 60 & 50 Hz |
| Current | 139 & 135 A | Power Factor | 89.5 |
| Duty | Continuous | Insulation Class | F |
| Design Code | B | KVA Code | G |
| Drive End Bearing Size | 6313 | Opp Drive End Bearing Size | 6313 |
| UL | Recognized | CSA | Y |
| CE | Y | IP Code | 22 |
| Number of Speeds | 1 | | |

Technical Specifications


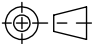
| | | | |
|-----------------------|------------------------------|--------------------|----------------------------|
| Electrical Type | Squirrel Cage Inverter Rated | Starting Method | Part Wdg Start Or Inverter |
| Poles | 2 | Rotation | Reversible |
| Resistance Main | .053 Ohms | Mounting | Rigid Base |
| Motor Orientation | Horizontal | Drive End Bearing | Ball |
| Opp Drive End Bearing | Ball | Frame Material | Cast Iron |
| Shaft Type | TS | Overall Length | 33.86 in |
| Shaft Diameter | 2.125 in | Shaft Extension | 4.25 in |
| Assembly/Box Mounting | F1/F2 CAPABLE | Inverter Load | VARIABLE 10:1 |
| Outline Drawing | SS620752-100 | Connection Drawing | EE7341C |

| 4 | | | | 3 | | | | 2 | | | | 1 |
|----------|-------|-------|-------|------|-------|-------|-------|------|------|----------|-----------|---|
| DASH NO. | B | C | D | E | 2E | 2F | 2FF | BA | BS | MOUNTING | FRAME | |
| 100 | 19.29 | 33.70 | 10.00 | 8.00 | 16.00 | --- | 12.25 | 6.62 | 8.54 | F1 OR F2 | 404TS | |
| 200 | 20.87 | 35.27 | | | | 12.25 | 13.75 | | 9.32 | | 404/405TS | |



| | | |
|--|-----------------------|-------------------------------|
| DRAWING REVISION C | REVISION BY GOPI J | REV DATE/© DATE 09/02/2022 |
| REQUEST NUMBER CR-0006851 | APPROVED BY SBD | DATE 09/02/2022 |
| REQUEST NUMBER DESCRIPTION VIEWS UPDATED AS PER 3D | | |
| COPYRIGHT (PER REVISION DATE) REGAL BELOIT AMERICA, INC. ALL RIGHTS RESERVED. PROPRIETARY AND CONFIDENTIAL INFORMATION - THIS DOCUMENT IS THE PROPERTY OF REGAL BELOIT AMERICA, INC. ("OWNER") AND CONTAINS OWNER'S PROPRIETARY INFORMATION. ANY PERSON, CORPORATION OR OTHER FIRM RECEIVING IT IS DEEMED, BY RECEIVING IT, TO AGREE THAT IT, AND/OR ANY PART OF IT, SHALL NOT BE DISCLOSED TO ANY PERSON, CORPORATION OR OTHER ENTITY, DUPLICATED, AND/OR USED, EXCEPT AS EXPRESSLY APPROVED IN WRITING IN ADVANCE BY OWNER. THIS DOCUMENT SHALL BE RETURNED TO OWNER UPON REQUEST. IT MAY BE SUBJECT TO CERTAIN RESTRICTIONS UNDER APPLICABLE EXPORT CONTROL LAWS AND REGULATIONS. | | |

PRIMARY DIMENSIONS ARE INCH
mm DIMENSIONS IN [BRACKETS]
ARE FOR REFERENCE ONLY

| | | |
|--|--|----------------------------|
| DRAWN BY WY |  Regal Beloit America, Inc. | |
| DATE 21/07/2016 | | |
| APPROVED BY | DESCRIPTION OUTLINE 404/405TS FR NEMA ODP CAST IRON | |
| DATE | | |
| REFERENCE | MATERIAL | PROCESS/FINISH |
| THIRD ANGLE PROJECTION  | SIZE B | DRAWING NUMBER SS620752 |
| | | SHEET 1 OF 1 |

THREE PHASE – PART WINDING START DELTA – 6 LEADS

START

CONNECT T1 TO LINE 1
CONNECT T2 TO LINE 2
CONNECT T3 TO LINE 3
T7–T8–T9 OPEN

RUN

CONNECT T1&T7 TO LINE 1
CONNECT T2&T8 TO LINE 2
CONNECT T3&T9 TO LINE 3

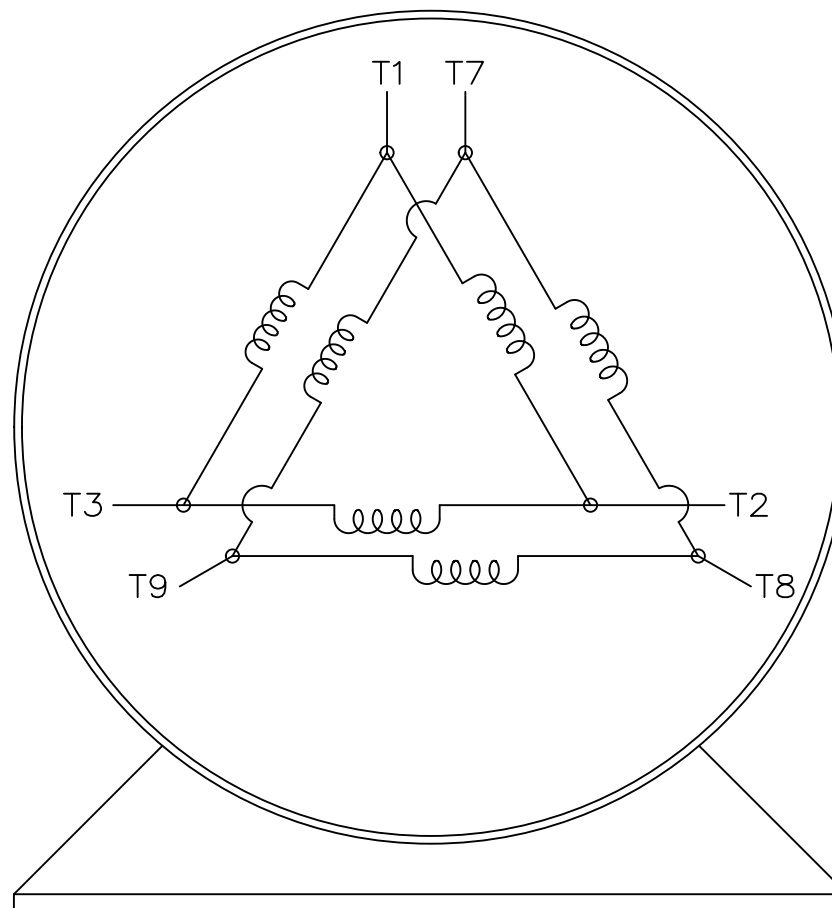
IF MOTOR HAS 2 T'S

START


CONNECT T1,T1 TO LINE 1
CONNECT T2,T2 TO LINE 2
CONNECT T3,T3 TO LINE 3
T7,T7–T8,T8–T9,T9 OPEN

RUN

CONNECT T1,T1&T7,T7 TO LINE 1
CONNECT T2,T2&T8,T8 TO LINE 2
CONNECT T3,T3&T9,T9 TO LINE 3



VIEW OF TERMINAL END

| | | | TOLERANCES UNLESS SPECIFIED | |  REGAL-BELOIT CORPORATION | DRAWN BLR 03-09-1998 | | |
|-----|--------------------------------------|----------------|--------------------------------|--------|---|--------------------------|-------------|------------|
| | | | DEC. | INCHES | | CHK | ML | 03-23-1998 |
| | | | .X | ± | – | APPD | GK | 03-23-1998 |
| | | | .XX | ± | – | SCALE 1=1 | | |
| E | NOTE ADDED FOR 2 T'S | NAR 17-12-2020 | RC | .XXX | ± | TITLE CONNECTION DIAGRAM | | |
| D | RE-DRAWN WITH REGAL LOGO ECO-0110493 | WGJ 09-30-2016 | EMH | .XXXX | ± | 3ø – 6 LEADS | | |
| NO. | REVISION | BY & DATE | CHK | ANG | ± | MAT'L. | | |
| | | | | | | FMP | | |
| | | | | | | PREV | | |
| | | | RFP | | | SIZE | DRAWING NO. | PAGE OF |
| | | | DIST | | | A | EE7341C | REV. E |

THIS DRAWING IN DESIGN AND DETAIL IS OUR PROPERTY AND MUST NOT BE USED EXCEPT IN CONNECTION WITH OUR WORK ALL RIGHTS OF DESIGN AND INVENTION ARE RESERVED
THIS IS AN ELECTRONICALLY GENERATED DOCUMENT – DO NOT SCALE THIS PRINT

CERTIFICATION DATA SHEET

Model#: 404TSTD6001 AA

WINDING#: HE32502010 NONE 1

CONN. DIAGRAM: EE7341C

ASSEMBLY: F1/F2 CAPABLE

OUTLINE: SS620752

TYPICAL MOTOR PERFORMANCE DATA

| HP | KW | SYNC. RPM | F.L. RPM | FRAME | ENCLOSURE | KVA CODE | DESIGN |
|---------|-------|-----------|-----------|-------|-----------|----------|--------|
| 125&100 | 93&75 | 3600 | 3575&2975 | 404TS | DP | G | B |

| PH | Hz | VOLTS | FL AMPS | START TYPE | DUTY | INSL | S.F | AMB°C | ELEVATION |
|----|-------|---------|---------|--------------------|----------------|------|-----------|-------|-----------|
| 3 | 60/50 | 460#380 | 139&135 | PWS OR INVERTER | CONTINUOU S | F7 | 1.15/1.15 | 40 | 3300 |

| | | | | | |
|-----------------------------|--------------------|--------------------|----------|-------------------|--------------|
| FULL LOAD EFF: 94.1&94.1 | 3/4 LOAD EFF: 94.1 | 1/2 LOAD EFF: 93.6 | GTD. EFF | ELEC. TYPE | NO LOAD AMPS |
| FULL LOAD PF: 89.5&89.5 | 3/4 LOAD PF: 87.5 | 1/2 LOAD PF: 81 | 93.6 | SQ CAGE INV RATED | 40.5 |

| F.L. TORQUE | LOCKED ROTOR AMPS | L.R. TORQUE | B.D. TORQUE | F.L. RISE°C |
|-------------|-------------------|---------------|---------------|-------------|
| 184 LB-FT | 900 | 340 LB-FT 185 | 478 LB-FT 260 | 35 |

| SOUND PRESSURE @ 3 FT. | SOUND POWER | ROTOR WK^2 | MAX. WK^2 | SAFE STALL TIME | STARTS /HOUR | APPROX. MOTOR WGT |
|---------------------------|-------------|------------|-----------|-----------------|-----------------|----------------------|
| 80 dBA | 90 dBA | 15 LB-FT^2 | - LB-FT^2 | 10 SEC. | 2 | 1000 LBS. |

*** SUPPLEMENTAL INFORMATION ***

| DE BRACKET TYPE | ODE BRACKET TYPE | MOUNT TYPE | ORIENTATION | SEVERE DUTY | HAZARDOUS LOCATION | DRIP COVER | SCREENS | PAINT |
|--------------------|---------------------|---------------|-------------|----------------|-----------------------|---------------|---------|------------------|
| STANDARD | STANDARD | RIGID | HORIZONTAL | FALSE | NONE | FALSE | NONE | BLUE (ENAMEL) |

| BEARINGS | | GREASE | SHAFT TYPE | SPECIAL DE | SPECIAL ODE | SHAFT MATERIAL | FRAME MATERIAL |
|----------|------|------------|------------|------------|-------------|----------------------------|-------------------|
| DE | OPE | | | | | | |
| BALL | BALL | POLYREX EM | TS | NONE | NONE | 1045 HOT ROLLED (C-204) | CAST IRON |
| 6313 | 6313 | | | | | | |

| THERMO-PROTECTORS | | | | THERMISTORS | CONTROL | SPACE /n HEATERS |
|-------------------|------------|----------|----------|-------------|---------|------------------|
| THERMOSTATS | PROTECTORS | WDG RTDs | BRG RTDs | | | |
| NONE | NOT | NONE | NONE | NONE | FALSE | NONE VOLTS |

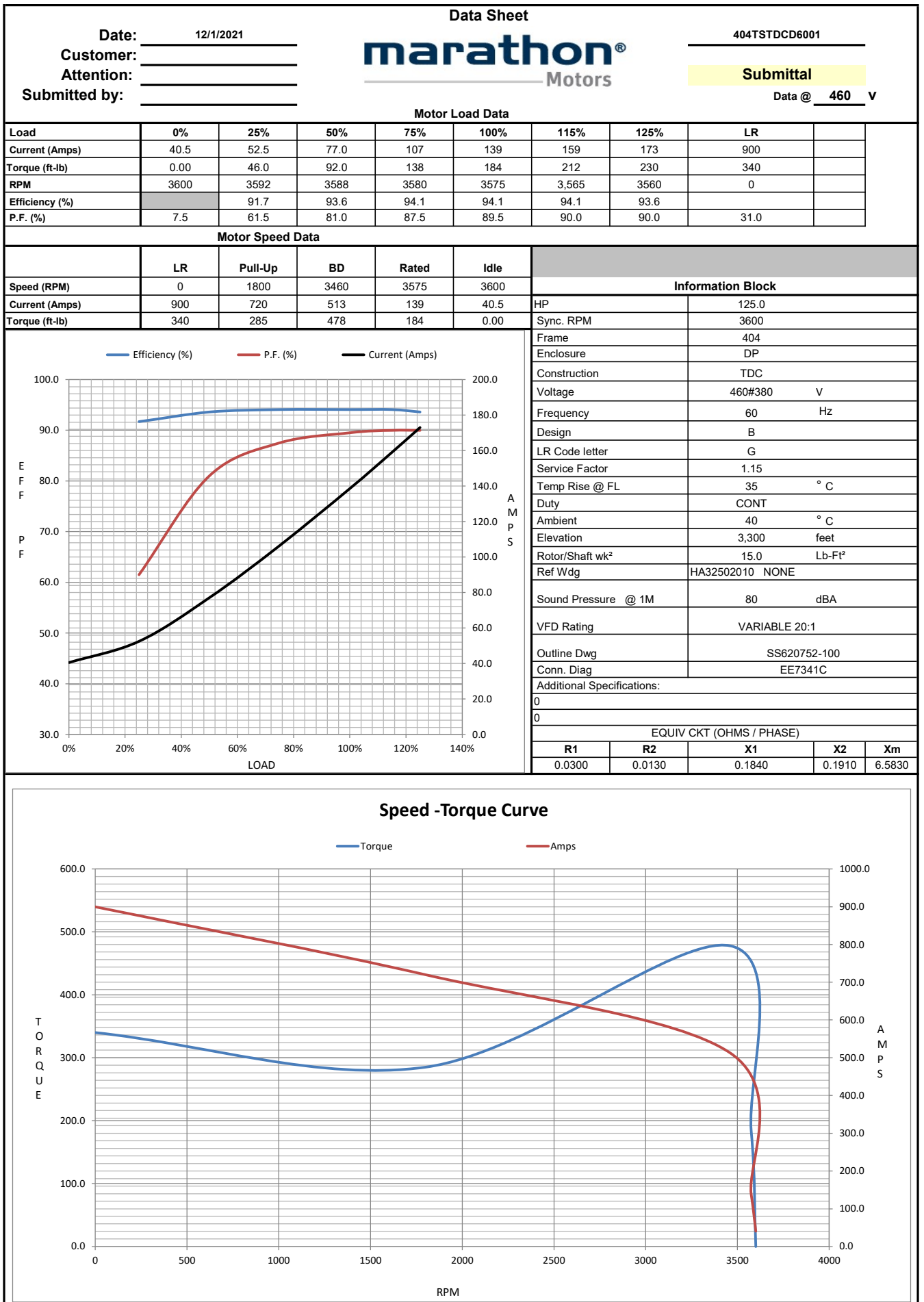
If Inverter equals NONE, contact factory for further information

| | |
|---------------------------------|---|
| * N O T E S * | INVERTER TORQUE: VARIABLE 10:1 |
| | INV. HP SPEED RANGE: NONE |
| | ENCODER: NONE NONE NONE NONE NONE PPR |
| | BRAKE: NONE NONE NONE P/N NONE NONE NONE NONE FT-LB NONE V NONE Hz |

DATE: 07/03/2017 04:09:04 AM

FORM 3531 REV.3 02/07/99

** Subject to change without notice.



EC Declaration of Conformity

The undersigned representing
the manufacturer:

Regal Beloit America
100 East Randolph St.
Wausau, WI 54401

and the authorized representative
established within the Community:

Marathon Electric UK
6F Thistleton Road Ind. Estate
Market Overton
Oakham, Rutland LE15 7PP UK

are committed to providing customers with products that comply with applicable regulations and international protocols to which they are subject, including the requirements of the European Parliament Directive on the Harmonization of the laws relating to electrical equipment designed for use within certain voltage limits (2014/35/EU).

Regal Beloit America declares that the following product(s), to which this declaration relates, are in conformity with the relevant sections of the EC standards listed below.

This statement supersedes any statements previously issued pertaining to the product(s) listed below and is subject to change without notice.

Model No : 404TSTD6001

(Model No. may contain prefix and/or suffix characters)

Catalog No : GT0048A

Rework No : N/A

Directives :

Low Voltage Directive 2014/35/EU

Harmonized Standards Used :

EN 60034-1: 2010 (IEC 60034-1: 2010)

EN 60034-5: 2001/A1:2007 (IEC 60034-5: 2000/A1:2006)

Authorized Representative:



Michael A. Logsdon
Vice President, Technology

Authorized Representative in the Community:



Julian Clark
Marketing Engineer

Created on 09/01/2022

CE 22